

Anti-LRP5 Polyclonal Antibody

Cat: AC50567

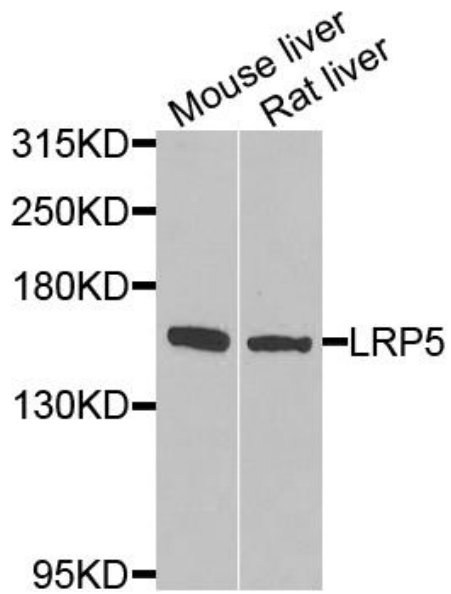
Summary:

- 【Product name】** : Anti-LRP5 antibody **【Source】** : Rabbit
- 【Isotype】** : IgG **【Species reactivity】** : Human Mouse Rat
- 【Swiss Prot】** : O75197 **【Gene ID】** : 4041
- 【Calculated】** : MW:179kDa **【Observed】** : MW:160kDa
- 【Purification】** : Affinity purification
- 【Tested applications】** : WB, IHC
- 【Recommended dilution】** : WB 1:500-2000. IHC 1:50-200.
- 【WB Positive sample】** : Mouse liver and Rat liver
- 【IHC Positive sample】** : Human liver tissue
- 【Subcellular location】** : Endoplasmic reticulum Membrane Single-pass type I membrane protein
- 【Immunogen】** : Recombinant protein of human LRP5
- 【Storage】** : Shipped at 4°C. Upon delivery aliquot and store at -20°C

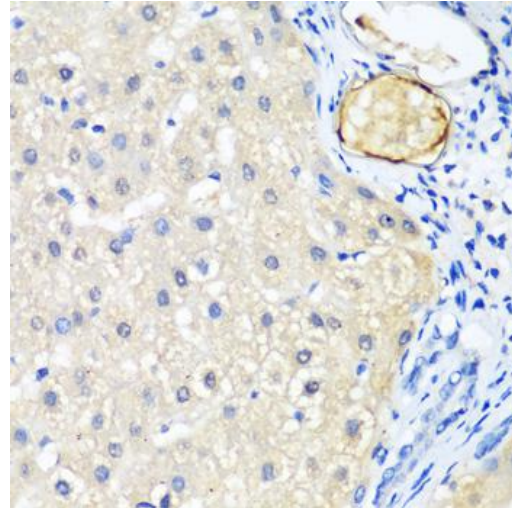
Background:

This gene encodes a transmembrane low-density lipoprotein receptor that binds and internalizes ligands in the process of receptor-mediated endocytosis. This protein also acts as a co-receptor with Frizzled protein family members for transducing signals by Wnt proteins and was originally cloned on the basis of its association with type 1 diabetes mellitus in humans. This protein plays a key role in skeletal homeostasis and many bone density related diseases are caused by mutations in this gene. Mutations in this gene also cause familial exudative vitreoretinopathy. Alternative splicing results in multiple transcript variants.

Verified picture



Western blot analysis with LRP5 antibody diluted at 1:1000



Immunohistochemistry of paraffin-embedded Human liver tissue with LRP5 antibody diluted at 1:200