

Anti-SLC9A3R1 Polyclonal Antibody

Cat: AC50569

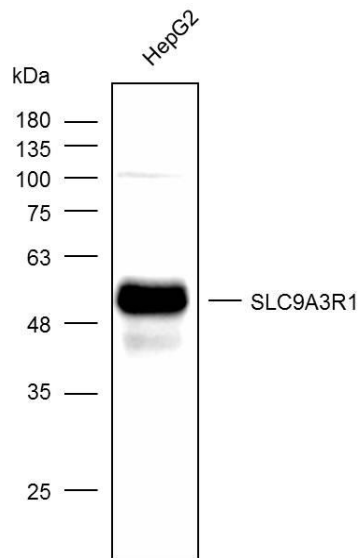
Summary:

- 【Product name】** : Anti-SLC9A3R1 antibody **【Source】** : Rabbit
【Isotype】 : IgG **【Species reactivity】** : Human Mouse Rat
【Swiss Prot】 : O14745 **【Gene ID】** : 9368
【Calculated】 : MW:39kDa **【Observed】** : MW:50kDa
【Purification】 : Affinity purification
【Tested applications】 : WB IHC
【Recommended dilution】 : WB 1:1000-4000. IHC 1:50-200.
【WB Positive sample】 : HepG2
【IHC Positive sample】 : Human cervical cancer and ovarian cancer
【Subcellular location】 : Apical cell membrane Cell projection Cytoplasm Endomembrane system
Peripheral membrane protein filopodium microvillus ruffle
【Immunogen】 : Recombinant protein of human SLC9A3R1
【Storage】 : Shipped at 4°C. Upon delivery aliquot and store at -20°C

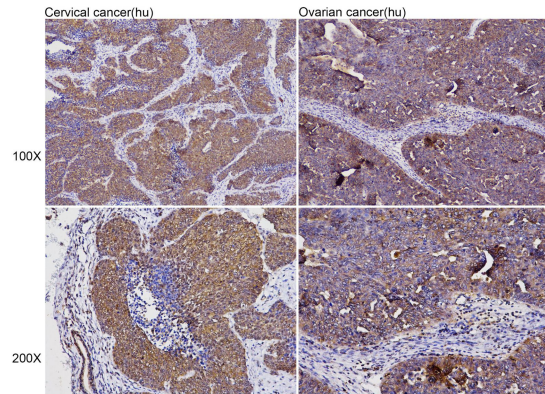
Background:

This gene encodes a sodium/hydrogen exchanger regulatory cofactor. The protein interacts with and regulates various proteins including the cystic fibrosis transmembrane conductance regulator and G-protein coupled receptors such as the beta2-adrenergic receptor and the parathyroid hormone 1 receptor. The protein also interacts with proteins that function as linkers between integral membrane and cytoskeletal proteins. The protein localizes to actin-rich structures including membrane ruffles, microvilli, and filopodia. Mutations in this gene result in hypophosphatemic nephrolithiasis/osteoporosis type 2, and loss of heterozygosity of this gene is implicated in breast cancer.

Verified picture



Western blot analysis with SLC9A3R1 antibody diluted at 1:1000



Immunohistochemistry of paraffin-embedded Human cervical cancer and ovarian cancer with SLC9A3R1 antibody diluted at 1:100