

Anti-INCENP Polyclonal Antibody

Cat: AC50697

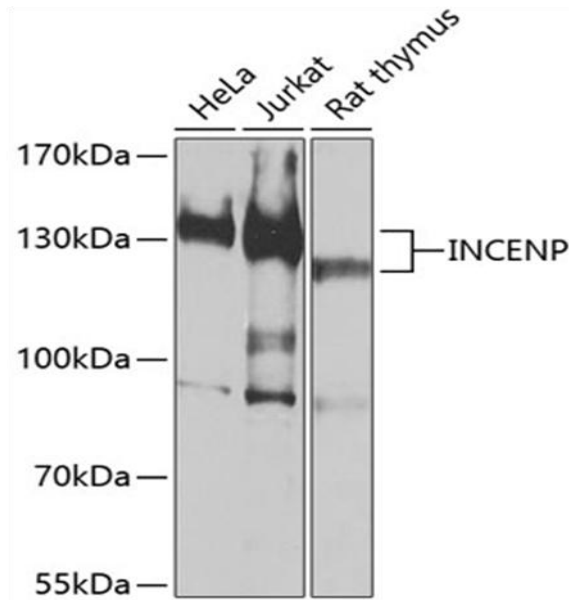
Summary:

- 【Product name】** : Anti-INCENP antibody **【Source】** : Rabbit
【Isotype】 : IgG **【Species reactivity】** : Human, Rat
【Swiss Prot】 : Q9NQS7 **【Gene ID】** : 3619
【Calculated】 : MW: 105kDa **【Observed】** : MW: 140kDa
【Purification】 : Affinity purification
【Tested applications】 : WB
【Recommended dilution】 : WB 1:500-2000.
【WB Positive sample】 : HeLa, Jurkat, Rat thymus
【Subcellular location】 : Chromosome Cytoplasm Nucleus centromere cytoskeleton kinetochore spindle.
【Immunogen】 : Recombinant protein of human INCENP.
【Storage】 : Shipped at 4°C. Upon delivery aliquot and store at -20°C

Background:

In mammalian cells, 2 broad groups of centromere-interacting proteins have been described: constitutively binding centromere proteins and 'passenger' proteins (reviewed by Choo, 1997). The constitutive proteins include CENPA (centromere protein A; MIM 117139), CENPB (MIM 117140), CENPC1 (MIM 117141), and CENPD (MIM 117142). The term 'passenger proteins' encompasses a broad collection of proteins that localize to the centromere during specific stages of the cell cycle (Earnshaw and Mackay, 1994 [PubMed 8088460]). These include CENPE (MIM 117143); MCAK (MIM 604538); KID (MIM 603213); cytoplasmic dynein (e.g., MIM 600112); CliPs (e.g., MIM 179838); and CENPF/mitosin (MIM 600236).

Verified picture



Western blot analysis with INCENP antibody
diluted at 1:1000