

Anti-PARP Polyclonal Antibody

Cat: AC50748

Summary:

【Product name】 : Anti-PARP antibody

【Source】 : Rabbit

【Isotype】 : IgG

【Species reactivity】 : Human Mouse Rat

【Swiss Prot】 : P09874

【Gene ID】 : 142

【Calculated】 : MW: 113kDa

【Observed】 : MW: 121kDa

【Purification】 : Affinity purification

【Tested applications】 : WB IHC IF

【Recommended dilution】 : WB 1:1000-3000. IHC 1:50-200. IF 1:50-200.

【WB Positive sample】 : SMCC7721, Mouse brain, Mouse spleen

【IHC Positive sample】 : Human mammary cancer

【Subcellular location】 : Nucleus nucleolus.

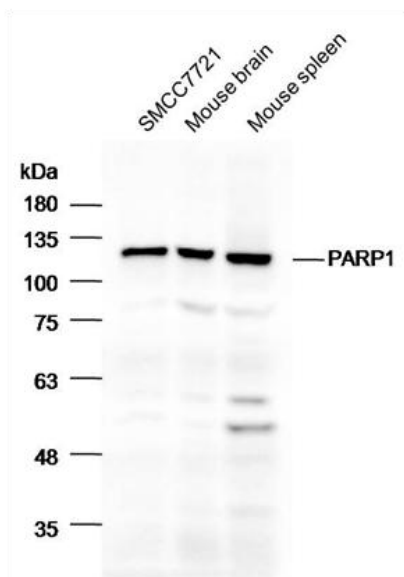
【Immunogen】 : Recombinant protein of human PARP.

【Storage】 : Shipped at 4°C. Upon delivery aliquot and store at -20°C

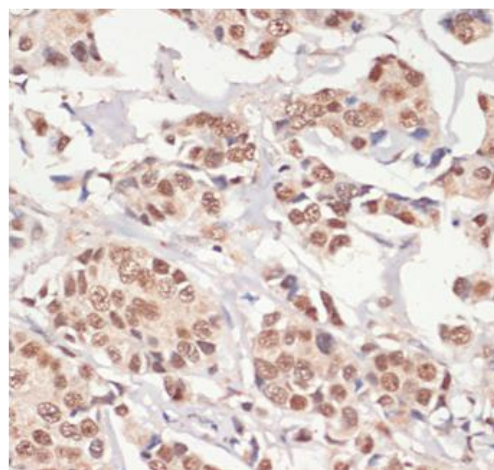
Background:

This gene encodes a chromatin-associated enzyme, poly(ADP-ribose)transferase, which modifies various nuclear proteins by poly(ADP-ribose)ation. The modification is dependent on DNA and is involved in the regulation of various important cellular processes such as differentiation, proliferation, and tumor transformation and also in the regulation of the molecular events involved in the recovery of cell from DNA damage. In addition, this enzyme may be the site of mutation in Fanconi anemia, and may participate in the pathophysiology of type I diabetes.

Verified picture



Western blot analysis with PARP antibody diluted at 1:1000



Immunohistochemistry of paraffin-embedded Human mammary cancer with PARP antibody diluted at 1:200