

Anti-BICD2 Polyclonal Antibody

Cat: AC50884

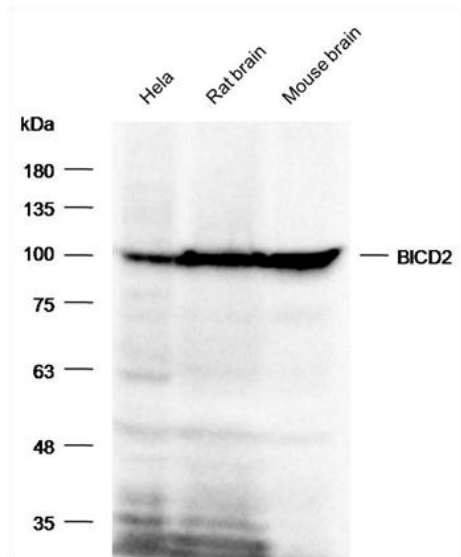
Summary:

- 【Product name】** : Anti-BICD2 antibody **【Source】** : Rabbit
【Isotype】 : IgG **【Species reactivity】** : Human, Mouse, Rat
【Swiss Prot】 : Q8TD16 **【Gene ID】** : 23299
【Calculated】 : MW: 94kDa **【Observed】** : MW: 100kDa
【Purification】 : Affinity purification
【Tested applications】 : WB IHC
【Recommended dilution】 : WB 1:500-2000. IHC 1:50-200.
【WB Positive sample】 : Mouse brain, Rat brain, Hela
【IHC Positive sample】 : Human breast cancer
【Subcellular location】 : Cytoplasm Golgi apparatus cytoskeleton.
【Immunogen】 : Recombinant protein of human BICD2.
【Storage】 : Shipped at 4°C. Upon delivery aliquot and store at -20°C

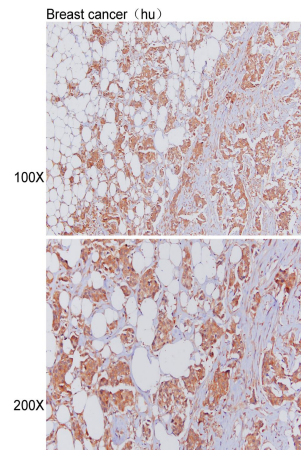
Background:

This gene is one of two human homologs of *Drosophila* bicaudal-D and a member of the Bicoid family. It has been implicated in dynein-mediated, minus end-directed motility along microtubules. It has also been reported to be a phosphorylation target of NIMA related kinase 8. Two alternative splice variants have been described.

Verified picture



Western blot analysis with BICD2 antibody diluted at 1:1000



Immunohistochemistry of paraffin-embedded Human breast cancer with BICD2 antibody diluted at 1:100