

Anti-INPP1 Polyclonal Antibody

Cat: AC50920

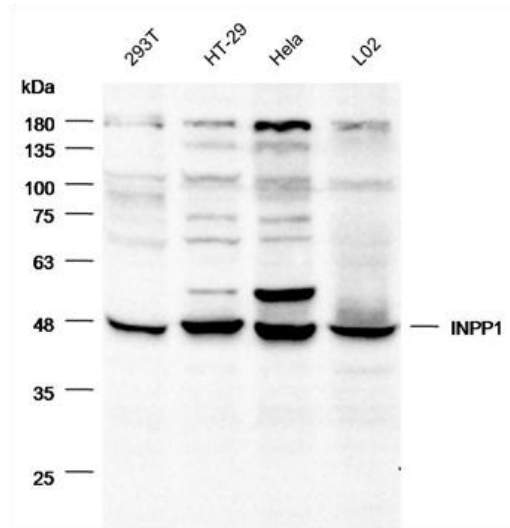
Summary:

- 【Product name】** : Anti-INPP1 antibody **【Source】** : Rabbit
【Isotype】 : IgG **【Species reactivity】** : Human, Mouse
【Swiss Prot】 : P49441 **【Gene ID】** : 3628
【Calculated】 : MW: 44kDa **【Observed】** : MW: 48kDa
【Purification】 : Affinity purification
【Tested applications】 : WB IHC
【Recommended dilution】 : WB 1:500-2000. IHC 1:50-200.
【WB Positive sample】 : 293T, HT-29, L-02, Hela
【IHC Positive sample】 : Human Colorectal cancer
【Subcellular location】 : Cytosol.
【Immunogen】 : Recombinant protein of human INPP1.
【Storage】 : Shipped at 4°C. Upon delivery aliquot and store at -20°C

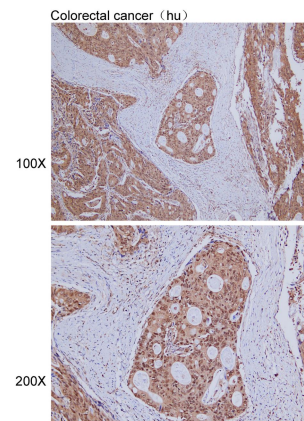
Background:

This gene encodes the enzyme inositol polyphosphate-1-phosphatase, one of the enzymes involved in phosphatidylinositol signaling pathways. This enzyme removes the phosphate group at position 1 of the inositol ring from the polyphosphates inositol 1,4-bisphosphate and inositol 1,3,4-trisphosphate.

Verified picture



Western blot analysis with INPP1 antibody diluted at 1:1000



Immunohistochemistry of paraffin-embedded Human Colorectal cancer with INPP1 antibody diluted at 1:100