

Anti-LYZL6 Polyclonal Antibody

Cat: AC51014

Summary:

【Product name】 : Anti-LYZL6 antibody

【Source】 : Rabbit

【Isotype】 : IgG

【Species reactivity】 : Human

【Swiss Prot】 : O75951

【Gene ID】 : 57151

【Calculated】 : MW:16kDa

【Observed】 : MW:17kDa

【Purification】 : Affinity purification

【Tested applications】 : WB IF

【Recommended dilution】 : WB 1:500-2000. IF 1:50-200

【WB Positive sample】 : human testis

【IF Positive sample】 : U2OS cells

【Subcellular location】 : Secreted

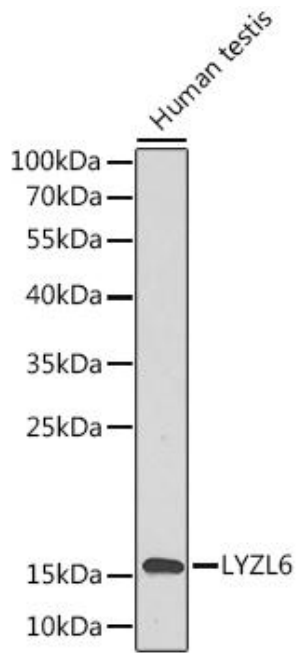
【Immunogen】 : Recombinant protein of human LYZL6

【Storage】 : Shipped at 4°C. Upon delivery aliquot and store at -20°C

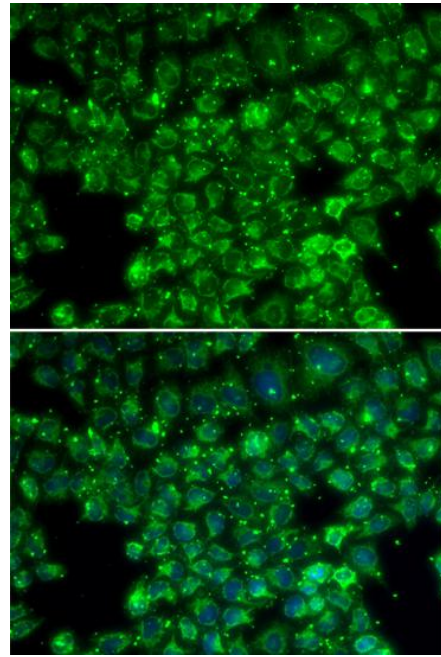
Background:

This gene encodes a member of the C-type lysozyme/alpha-lactalbumin family. C-type lysozymes are bacteriolytic factors that play a role in host defense, whereas alpha-lactalbumins mediate lactose biosynthesis. The encoded protein contains catalytic residues characteristic of C-type lysozymes and may play a role in male reproduction. Alternatively spliced transcript variants have been observed for this gene.

Verified picture



Western blot analysis with LYZL6 antibody diluted at 1:1000; Lane: human testis.



Immunofluorescence analysis of U2OS cells using LYZL6 antibody diluted at 1:100.