

## Anti-CHMP1A Polyclonal Antibody

Cat: AC51186

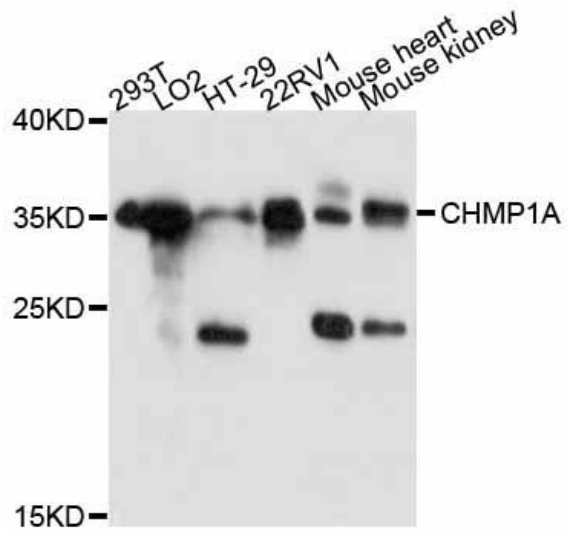
### Summary:

- 【Product name】**: Anti-CHMP1A antibody      **【Source】** : Rabbit  
**【Isotype】** : IgG      **【Species reactivity】** : Human Mouse  
**【Swiss Prot】** : Q9HD42      **【Gene ID】** : 5119  
**【Calculated】** : MW:22kDa      **【Observed】** : MW:35kDa  
**【Purification】** : Affinity purification  
**【Tested applications】** : WB  
**【Recommended dilution】** : WB 1:500-2000.  
**【WB Positive sample】** : 293T,LO2,HT-29,22RV1,Mouse heart,Mouse kidney  
**【Subcellular location】**: Cytoplasm Endosome membrane Nucleus matrix Peripheral membrane protein  
**【Immunogen】** : Recombinant protein of human CHMP1A  
**【Storage】** : Shipped at 4°C. Upon delivery aliquot and store at -20°C

### Background:

This gene encodes a member of the CHMP/Chmp family of proteins which are involved in multivesicular body sorting of proteins to the interiors of lysosomes. The initial prediction of the protein sequence encoded by this gene suggested that the encoded protein was a metallopeptidase. The nomenclature has been updated recently to reflect the correct biological function of this encoded protein. Several transcripts encoding different isoforms have been found for this gene.

## Verified picture



Western blot analysis with CHMP1A  
antibody diluted at 1:1000