

Anti-HLA-DRA Polyclonal Antibody

Cat: AC51226

Summary:

【 Product name 】 : Anti-HLA-DRA **【Source】** : Rabbit
antibody

【Isotype】 : IgG

【Species reactivity】 : Human Mouse

【Swiss Prot】 : P01903

【Gene ID】 : 3122

【Calculated】 : MW:29kDa

【Observed】 : MW:37kDa

【Purification】 : Affinity purification

【Tested applications】 : WB

【Recommended dilution】 : WB 1:500-2000.

【WB Positive sample】 : Raji, Mouse intestine

【Subcellular location】: Cell membrane Endoplasmic reticulum membrane Endosome membrane Golgi apparatus Late endosome membrane Lysosome membrane Single-pass type I membrane protein trans-Golgi network membrane

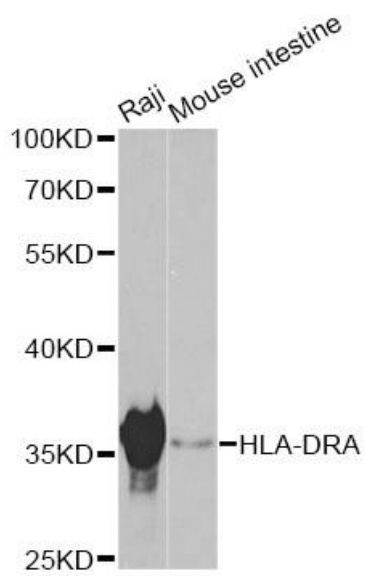
【Immunogen】 : Recombinant protein of human HLA-DRA

【Storage】 : Shipped at 4°C. Upon delivery aliquot and store at -20°C

Background:

HLA-DRA is one of the HLA class II alpha chain paralogues. This class II molecule is a heterodimer consisting of an alpha and a beta chain, both anchored in the membrane. It plays a central role in the immune system by presenting peptides derived from extracellular proteins. Class II molecules are expressed in antigen presenting cells (APC: B lymphocytes, dendritic cells, macrophages). The alpha chain is approximately 33-35 kDa and its gene contains 5 exons. Exon 1 encodes the leader peptide, exons 2 and 3 encode the two extracellular domains, and exon 4 encodes the transmembrane domain and the cytoplasmic tail. DRA does not have polymorphisms in the peptide binding part and acts as the sole alpha chain for DRB1, DRB3, DRB4 and DRB5.

Verified picture



Western blot analysis with HLA-DRA
antibody diluted at 1:1000