

Anti-GGA2 Rabbit Polyclonal Antibody

Cat:AC51233

Basic information

Source: Rabbit

Swiss Prot:Q9UJY4

Species reactivity: Human,Mouse,Rat

Gene ID:23062

Isotype: IgG

Tested applications: WB,IHC,IF

Purification: Affinity purification

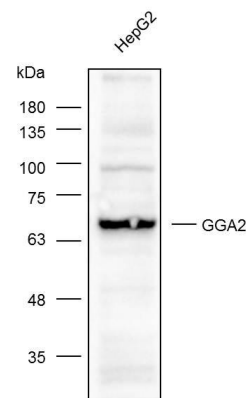
Immunogen:Recombinant protein of human GGA2

MW(kDa):67kDa

Storage: Store at -20°C. Avoid freeze / thaw cycles.
Buffer: PBS with 0.02% sodium azide, 50% glycerol, pH7.3.

Background:

This gene encodes a member of the Golgi-localized, gamma adaptin ear-containing, ARF-binding (GGA) family. This family includes ubiquitous coat proteins that regulate the trafficking of proteins between the trans-Golgi network and the lysosome. These proteins share an amino-terminal VHS domain which mediates sorting of the mannose 6-phosphate receptors at the trans-Golgi network. They also contain a carboxy-terminal region with homology to the ear domain of gamma-adaptins. This family member may play a significant role in cargo molecules regulation and clathrin-coated vesicle assembly.



Western blot analysis with K002376P diluted at 1:1,000