

## Anti-WSB1 Polyclonal Antibody

Cat: AC51305

### Summary:

**【Product name】** : Anti-WSB1 antibody

**【Source】** : Rabbit

**【Isotype】** : IgG

**【Species reactivity】** : Human

**【Swiss Prot】** : Q9Y6I7

**【Gene ID】** : 26118

**【Calculated】** : MW:47kDa

**【Observed】** : MW:45kDa

**【Purification】** : Affinity purification

**【Tested applications】** : WB

**【Recommended dilution】** : WB 1:200-2000.

**【WB Positive sample】** : HT-29,A549,HeLa,HepG2,SGC7901

**【Subcellular location】** : Cytoplasm

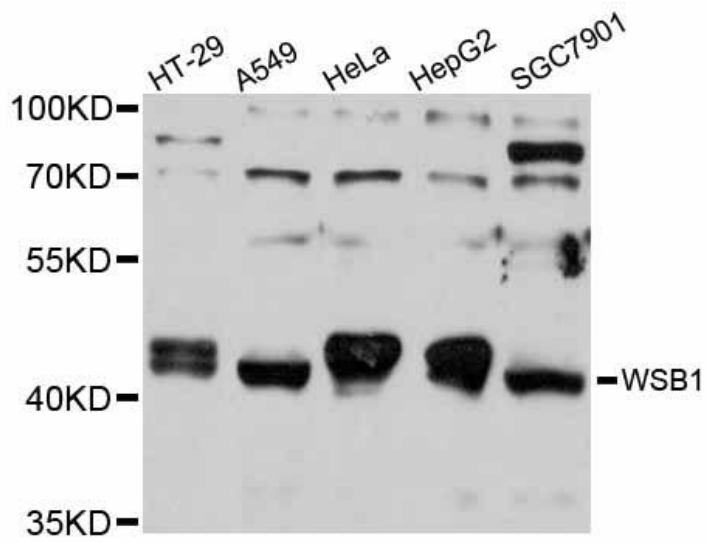
**【Immunogen】** : Recombinant protein of human WSB1

**【Storage】** : Shipped at 4°C. Upon delivery aliquot and store at -20°C

### Background:

This gene encodes a member of the WD-protein subfamily. This protein shares a high sequence identity to mouse and chick proteins. It contains several WD-repeats spanning most of the protein and an SOCS box in the C-terminus. Alternatively spliced transcript variants encoding distinct isoforms have been found for this gene.

## Verified picture



Western blot analysis with WSB1 antibody  
diluted at 1:1000