

Anti-ACP1 Polyclonal Antibody

Cat: AC51351

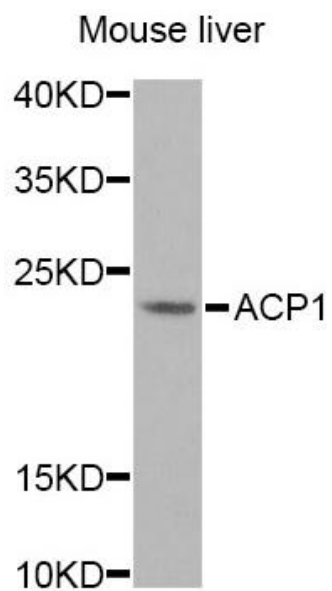
Summary:

- 【Product name】** : Anti-ACP1 antibody **【Source】** : Rabbit
【Isotype】 : IgG **【Species reactivity】** : Human Mouse
【Swiss Prot】 : P24666 **【Gene ID】** : 52
【Calculated】 : MW:18kDa **【Observed】** : MW:23kDa
【Purification】 : Affinity purification
【Tested applications】 : WB, IHC
【Recommended dilution】 : WB 1:500-2000. IHC 1:50-100.
【WB Positive sample】 : Mouse liver
【IHC Positive sample】 : Mouse kidney tissue
【Subcellular location】 : Cytoplasm
【Immunogen】 : Recombinant protein of human ACP1
【Storage】 : Shipped at 4°C. Upon delivery aliquot and store at -20°C

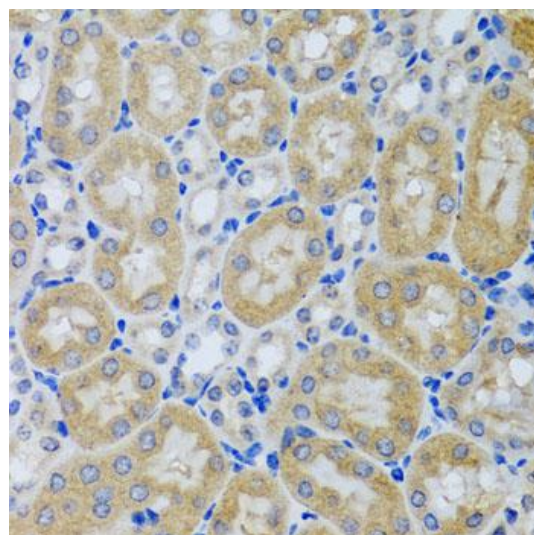
Background:

The product of this gene belongs to the phosphotyrosine protein phosphatase family of proteins. It functions as an acid phosphatase and a protein tyrosine phosphatase by hydrolyzing protein tyrosine phosphate to protein tyrosine and orthophosphate. This enzyme also hydrolyzes orthophosphoric monoesters to alcohol and orthophosphate. This gene is genetically polymorphic, and three common alleles segregating at the corresponding locus give rise to six phenotypes. Each allele appears to encode at least two electrophoretically different isozymes, Bf and Bs, which are produced in allele-specific ratios. Multiple alternatively spliced transcript variants encoding distinct isoforms have been identified for this gene.

Verified picture



Western blot analysis with ACP1 antibody
diluted at 1:1000



Immunohistochemistry of paraffin-embedded
Mouse kidney tissue with ACP1 antibody
diluted at 1:100