

## Anti-CALU Polyclonal Antibody

Cat: AC51358

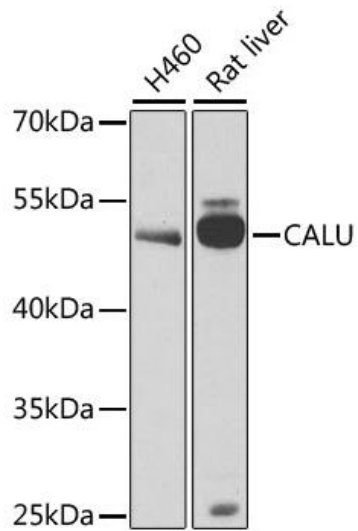
### Summary:

- 【Product name】** : Anti-CALU antibody      **【Source】** : Rabbit  
**【Isotype】** : IgG      **【Species reactivity】** : Human Mouse Rat  
**【Swiss Prot】** : O43852      **【Gene ID】** : 813  
**【Calculated】** : MW:37kDa      **【Observed】** : MW:50kDa  
**【Purification】** : Affinity purification  
**【Tested applications】** : WB, IF  
**【Recommended dilution】** : WB 1:500-2000. IF 1:50-100.  
**【WB Positive sample】** : H460,Rat liver  
**【IF Positive sample】** : CALU cell  
**【Subcellular location】** : Endoplasmic reticulum lumen Melanosome Sarcoplasmic reticulum lumen  
Secreted  
**【Immunogen】** : Recombinant protein of human CALU  
**【Storage】** : Shipped at 4°C. Upon delivery aliquot and store at -20°C

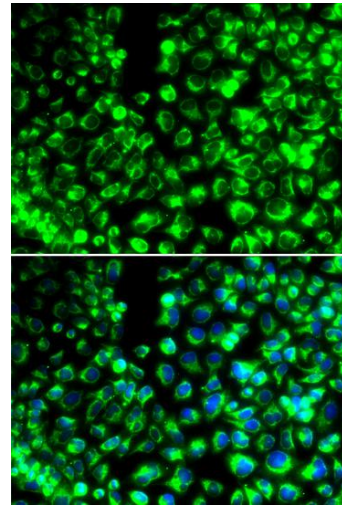
### Background:

The product of this gene is a calcium-binding protein localized in the endoplasmic reticulum (ER) and it is involved in such ER functions as protein folding and sorting. This protein belongs to a family of multiple EF-hand proteins (CERC) that include reticulocalbin, ERC-55, and Cab45 and the product of this gene. Alternatively spliced transcript variants encoding different isoforms have been identified.

## Verified picture



Western blot analysis with CALU antibody diluted at 1:1000



Immunofluorescence analysis of HeLa cells using CALU antibody diluted at 1:100.