

Anti-BRWD1 Polyclonal Antibody

Cat: AC51451

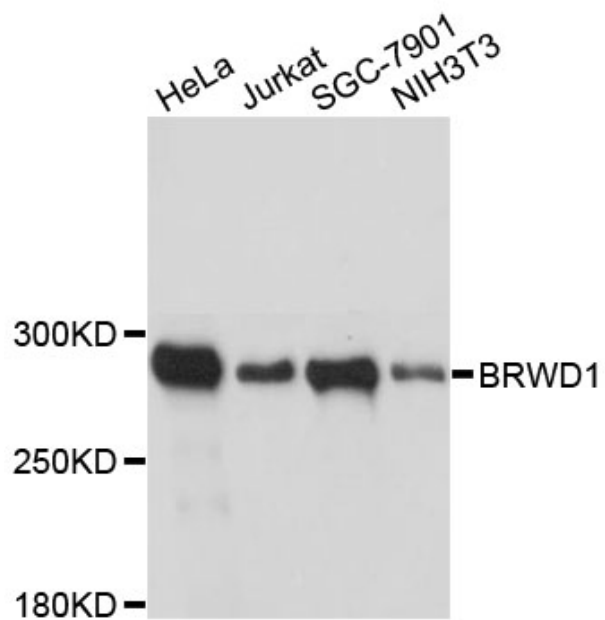
Summary:

- | | |
|---|---|
| 【Product name】 : Anti-BRWD1 antibody | 【Source】 : Rabbit |
| 【Isotype】 : IgG | 【Species reactivity】 : Human Mouse |
| 【Swiss Prot】 : Q9NSI6 | 【Gene ID】 : 54014 |
| 【Calculated】 : MW:13/249/257/263kDa | 【Observed】 : MW:280kDa |
| 【Purification】 : Affinity purification | |
| 【Tested applications】 : WB | |
| 【Recommended dilution】 : WB 1:1000-3000. | |
| 【WB Positive sample】 : HeLa,Jurkat,SGC-7901,NIH/3T3 | |
| 【Subcellular location】 : Cytoplasm Nucleus | |
| 【Immunogen】 : Recombinant protein of human BRWD1 | |
| 【Storage】 : Shipped at 4°C. Upon delivery aliquot and store at -20°C | |

Background:

This gene encodes a member of the WD repeat protein family. WD repeats are minimally conserved regions of approximately 40 amino acids typically bracketed by gly-his and trp-asp (GH-WD) residues which may facilitate formation of heterotrimeric or multiprotein complexes. Members of this family are involved in a variety of cellular processes including cell cycle progression, signal transduction, apoptosis, and gene regulation. This protein contains 2 bromodomains and multiple WD repeats. This gene is located within the Down syndrome region-2 on chromosome 21. Alternative splicing of this gene generates multiple transcript variants encoding distinct isoforms. In mouse, this gene encodes a nuclear protein that has a polyglutamine-containing region that functions as a transcriptional activation domain which may regulate chromatin remodelling and associates with a component of the SWI/SNF chromatin remodelling complex.

Verified picture



Western blot analysis with BRWD1 antibody
diluted at 1:3000