

Anti-SELP Polyclonal Antibody

Cat: AC51554

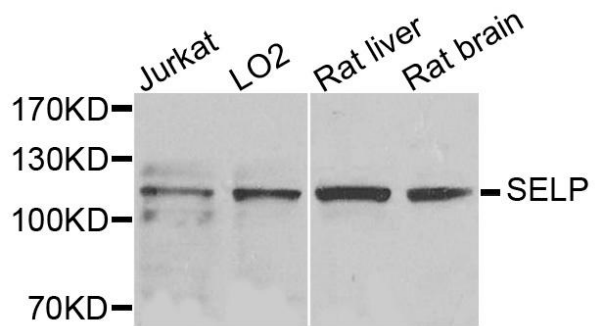
Summary:

- 【Product name】** : Anti-SELP antibody **【Source】** : Rabbit
- 【Isotype】** : IgG **【Species reactivity】** : Human Rat
- 【Swiss Prot】** : P16109 **【Gene ID】** : 6403
- 【Calculated】** : MW:91kDa **【Observed】** : MW:115kDa
- 【Purification】** : Affinity purification
- 【Tested applications】** : WB IHC
- 【Recommended dilution】** : WB 1:500-2000. IHC 1:50-200.
- 【WB Positive sample】** : Jurkat,LO2,Rat liver,Rat brain
- 【IHC Positive sample】** : Human colorectal cancer
- 【Subcellular location】** : Membrane Single-pass type I membrane protein
- 【Immunogen】** : Recombinant protein of human SELP
- 【Storage】** : Shipped at 4°C. Upon delivery aliquot and store at -20°C

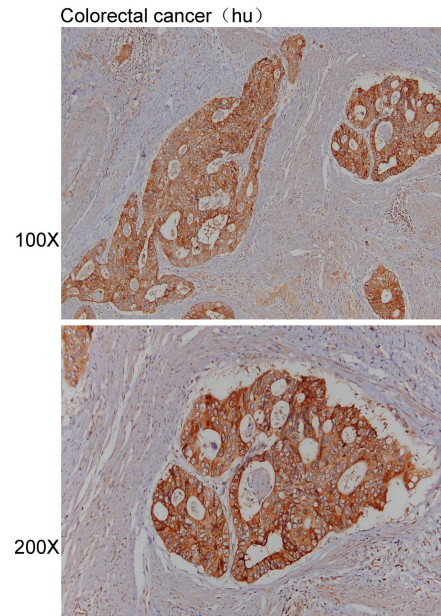
Background:

This gene encodes a 140 kDa protein that is stored in the alpha-granules of platelets and Weibel-Palade bodies of endothelial cells. This protein redistributes to the plasma membrane during platelet activation and degranulation and mediates the interaction of activated endothelial cells or platelets with leukocytes. The membrane protein is a calcium-dependent receptor that binds to sialylated forms of Lewis blood group carbohydrate antigens on neutrophils and monocytes. Alternative splice variants may occur but are not well documented.

Verified picture



Western blot analysis with SELP antibody diluted at 1:1000



Immunohistochemistry of paraffin-embedded Human colorectal cancer with SELP antibody diluted at 1:100