

Anti-TLR8 Rabbit Polyclonal Antibody

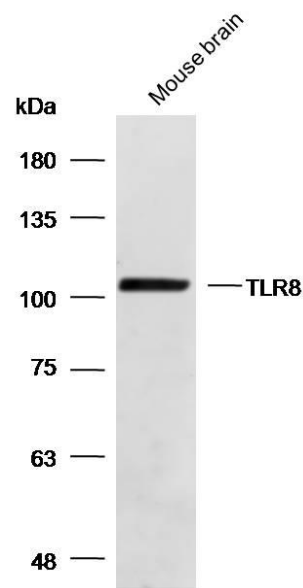
Cat:AC51578

Basic information

Source: Rabbit**Swiss Prot:** Q9NR97**Species reactivity:** Human Mouse**Gene ID:**51311**Isotype:** IgG**Tested applications:** WB IF**Purification:** Affinity purification**Immunogen:** Recombinant protein of human TLR8**MW(kDa):**120kDa**Storage:** Store at -20°C. Avoid freeze / thaw cycles.
Buffer: PBS with 0.02% sodium azide, 50% glycerol, pH7.3.

Background:

The protein encoded by this gene is a member of the Toll-like receptor (TLR) family which plays a fundamental role in pathogen recognition and activation of innate immunity. TLRs are highly conserved from *Drosophila* to humans and share structural and functional similarities. They recognize pathogen-associated molecular patterns (PAMPs) that are expressed on infectious agents, and mediate the production of cytokines necessary for the development of effective immunity. The various TLRs exhibit different patterns of expression. This gene is predominantly expressed in lung and peripheral blood leukocytes, and lies in close proximity to another family member, TLR7, on chromosome X.



Western blot analysis with Anti-TLR8 Rabbit Polyclonal Antibody diluted at 1:1,000