

# Anti-PRMT5 Rabbit Polyclonal Antibody

Cat:AC51588

## Basic information

**Source:** Rabbit

**Swiss Prot:** O14744

**Species reactivity:** Human Mouse Rat Monkey

**Gene ID:**10419

**Isotype:** IgG

**Tested applications:** WB IHC IF

**Purification:** Affinity purification

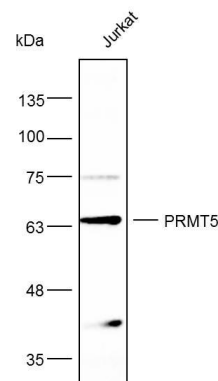
**Immunogen:** A synthetic peptide of human PRMT5

**MW(kDa):**54/68/71/73kDa

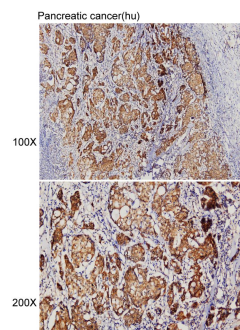
**Storage:** Store at -20°C. Avoid freeze / thaw cycles.  
**Buffer:** PBS with 0.02% sodium azide, 50% glycerol, pH7.3.

### Background:

This gene encodes an enzyme that belongs to the methyltransferase family. The encoded protein catalyzes the transfer of methyl groups to the amino acid arginine, in target proteins that include histones, transcriptional elongation factors and the tumor suppressor p53. This gene plays a role in several cellular processes, including transcriptional regulation, and the assembly of small nuclear ribonucleoproteins. A pseudogene of this gene has been defined on chromosome 4. Alternative splicing results in multiple transcript variants encoding different isoforms.



Western blot analysis with Anti-PRMT5 Rabbit Polyclonal Antibody diluted at 1:1,000



Immunohistochemistry of paraffin-embedded pancreatic cancer(hu) using Anti-PRMT5 Rabbit Polyclonal Antibody at dilution of 1:100 (x100 lens、x200 lens).