

# Anti-TRIM21 Rabbit Polyclonal Antibody

Cat:AC51843

## Basic information

**Source:** Rabbit

**Swiss Prot:**P19474

**Species reactivity:** Human

**Gene ID:**6737

**Isotype:** IgG

**Tested applications:** WB IHC IF

**Purification:** Affinity purification

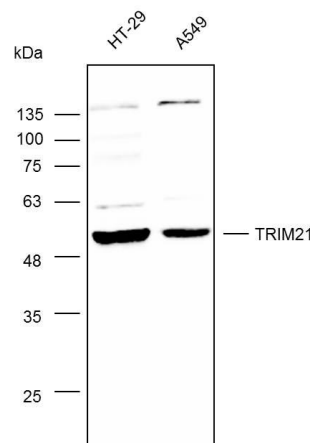
**Immunogen:**Recombinant protein of human TRIM21

**MW(kDa):**54kDa

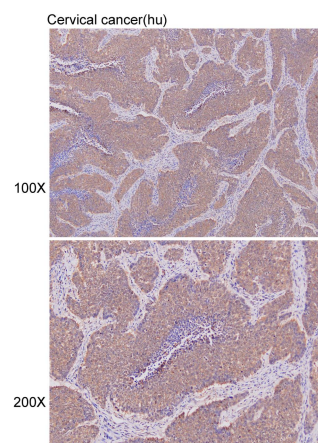
**Storage:** Store at -20°C. Avoid freeze / thaw cycles.  
**Buffer:** PBS with 0.02% sodium azide, 50% glycerol, pH7.3.

### Background:

This gene encodes a member of the tripartite motif (TRIM) family. The TRIM motif includes three zinc-binding domains, a RING, a B-box type 1 and a B-box type 2, and a coiled-coil region. The encoded protein is part of the RoSSA ribonucleoprotein, which includes a single polypeptide and one of four small RNA molecules. The RoSSA particle localizes to both the cytoplasm and the nucleus. RoSSA interacts with autoantigens in patients with Sjogren syndrome and systemic lupus erythematosus. Alternatively spliced transcript variants for this gene have been described but the full-length nature of only one has been determined.



Western blot analysis with TRIM21 diluted at 1:1,000



Immunohistochemistry of paraffin-embedded cervical cancer(hu) using TRIM21 antibody at dilution of 1:100 (x100 lens. x200 lens).