

Appearance

浅黄色粉末

Assay

≥98%

Melting Point(°C)

≥138°C

Water

≤0.5%

Ash

≤0.05%

Solubility

10mg/mL, CH<sub>2</sub>CL<sub>2</sub>

Hi, 欢迎来到吉至生化, 品质好, 服务好! 热线: 400-900-4166

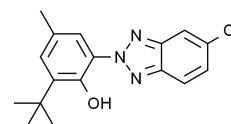


上海吉至生化科技有限公司  
Shanghai Acme Biochemical Technology Co., Ltd.

## Product Specifications

Structure:

Name	2-(叔丁基)-6-(5-氯-2H-苯并[d][1,2,3]三唑-2-基)-4-甲基苯酚
EN Name	2-(5-Chloro-2-benzotriazolyl)-6-tert-butyl-p-cresol
Catalog	C39850
CAS	3896-11-5
M.F.	C H Cl N O
M.W.	315.80



Test	Norm
Appearance	浅黄色粉末
Assay	≥98%
Melting Point(°C)	≥138°C
Water	≤0.5%
Ash	≤0.05%

Solubility	10mg/mL,CH <sub>2</sub> CL <sub>2</sub>
------------	---

Shanghai AcmeC Biochemical Co.,Ltd.  
1301 Rm,NO.1,1588 Wangyuan South Rd,Fengxian,Shanghai



客服电话  
400-900-4166



正品保障  
正品保障 提供发票



急速物流  
现货闪电 当时发货



售后无忧  
不满意退货

产品仅供科研!



[www.acmec-e.com](http://www.acmec-e.com)



400-900-4166