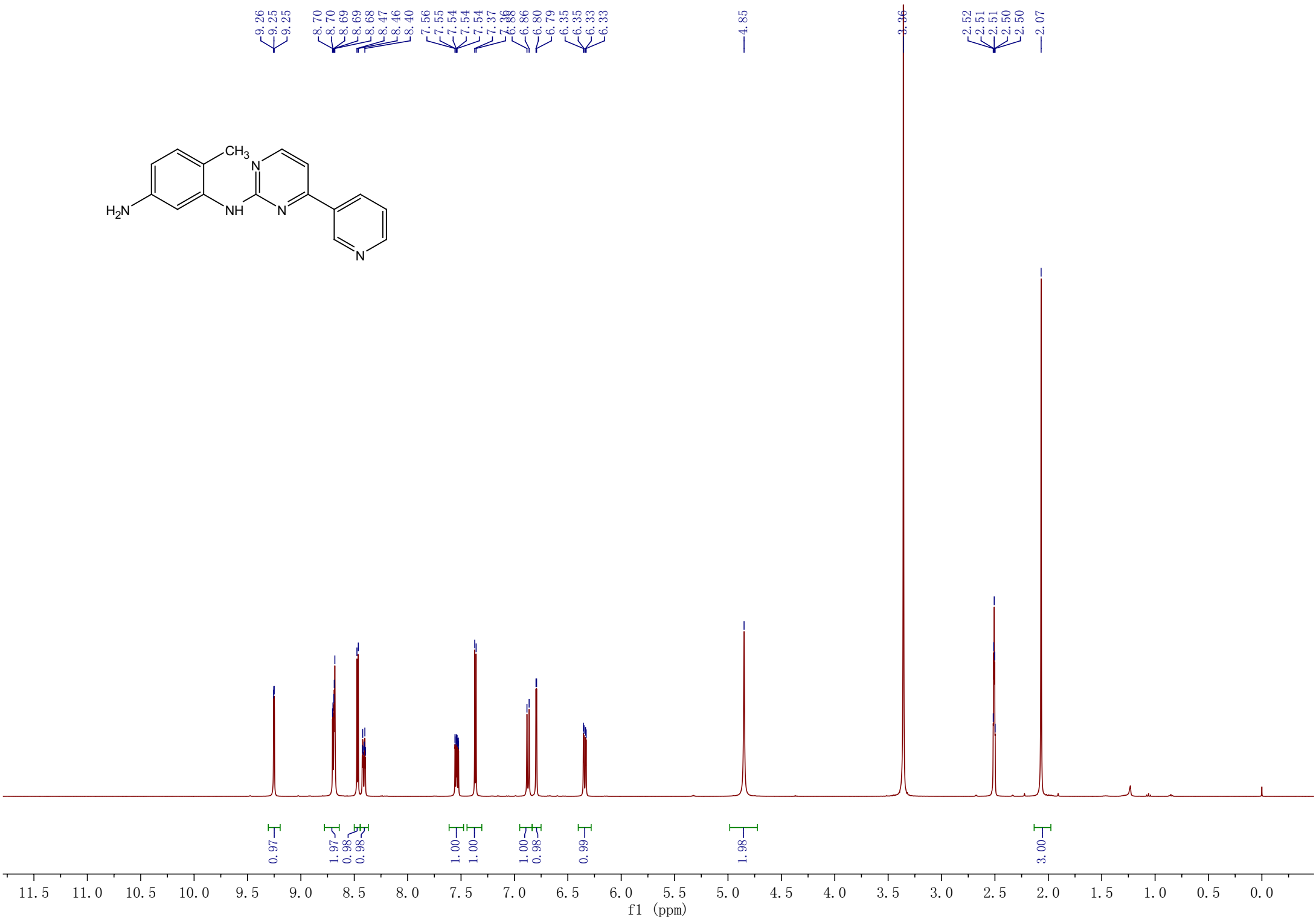


9.26
9.25
9.25
8.70
8.70
8.69
8.69
8.68
8.47
8.46
8.40
7.56
7.55
7.54
7.54
7.54
7.37
7.37
6.86
6.80
6.79
6.35
6.35
6.33
6.33

4.85

3.36

2.52
2.51
2.51
2.50
2.50
2.07



11.5 11.0 10.5 10.0 9.5 9.0 8.5 8.0 7.5 7.0 6.5 6.0 5.5 5.0 4.5 4.0 3.5 3.0 2.5 2.0 1.5 1.0 0.5 0.0

f1 (ppm)