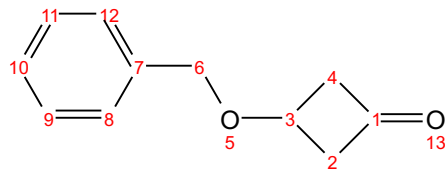


C8-sjj-1219-9. 71. 1. 1r
C8-sjj-1219-9 CDC13 1H



7.38
7.37
7.37
7.36
7.36
7.36
7.35
7.33
7.33
7.32
7.26

4.53
4.39
4.39
4.38
4.37
4.36
3.23
3.23
3.22
3.22
3.21
3.17
3.17
3.17
3.16
3.16
3.13

— 0.00

