

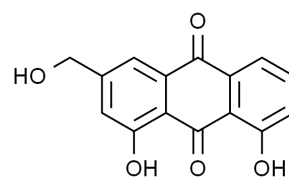


上海吉至生化科技有限公司  
Shanghai Acmec Biochemical Technology Co., Ltd.

## Product Specifications

Structure:

Name	芦荟大黄素
EN Name	Aloe-emodine
Catalog	A85630
CAS	481-72-1
M.F.	C <sub>15</sub> H <sub>10</sub> O <sub>5</sub>
M.W.	270.24



Test	Norm
Appearance	Earth-yellow solid
Purity	≥95%

Shanghai Acmec Biochemical Co.,Ltd.  
1301 Rm,NO.1,1588 Wangyuan South Rd,Fengxian,Shanghai



产品仅供科研!