

## Anti-HIF1A Polyclonal Antibody

Cat: AC50406

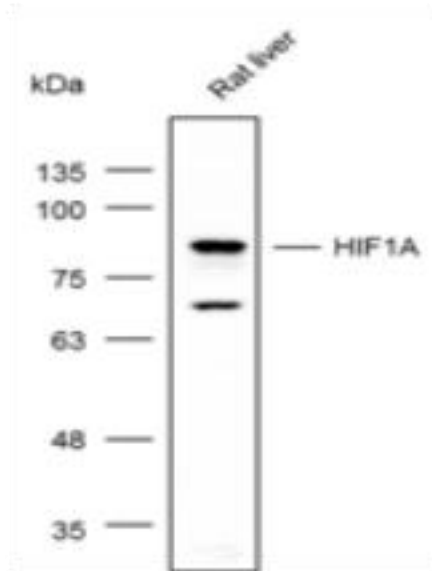
### Summary:

- |   |   |
|---|---|
| <b>【Product name】</b> : Anti-HIF1A antibody                                 | <b>【Source】</b> : Rabbit                  |
| <b>【Isotype】</b> : IgG  | <b>【Species reactivity】</b> : Human Mouse |
| <b>【Swiss Prot】</b> : Q16665  | <b>【Gene ID】</b> : 3091                   |
| <b>【Calculated】</b> : MW: 83/93/96kDa                                       | <b>【Observed】</b> : MW: 85kDa             |
| <b>【Purification】</b> : Affinity purification                               |   |
| <b>【Tested applications】</b> : WB IHC IF                                    |   |
| <b>【Recommended dilution】</b> : WB 1:500-2000. IHC 1:50-200. IF 1:50-200.   |   |
| <b>【WB Positive sample】</b> : Rat liver                                     |   |
| <b>【IHC Positive sample】</b> : Human breast cancer                          |   |
| <b>【Subcellular location】</b> : Cytoplasm Nucleus Nucleus speckle           |   |
| <b>【Immunogen】</b> : A synthetic peptide of human HIF1A                     |   |
| <b>【Storage】</b> : Shipped at 4°C. Upon delivery aliquot and store at -20°C |   |

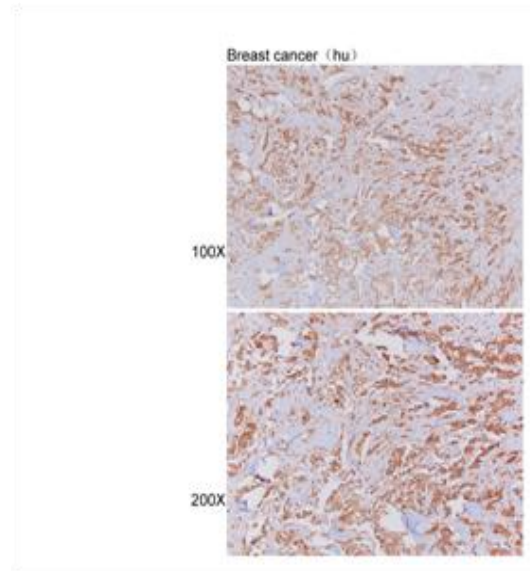
### Background:

This gene encodes the alpha subunit of transcription factor hypoxia-inducible factor-1 (HIF-1), which is a heterodimer composed of an alpha and a beta subunit. HIF-1 functions as a master regulator of cellular and systemic homeostatic response to hypoxia by activating transcription of many genes, including those involved in energy metabolism, angiogenesis, apoptosis, and other genes whose protein products increase oxygen delivery or facilitate metabolic adaptation to hypoxia. HIF-1 thus plays an essential role in embryonic vascularization, tumor angiogenesis and pathophysiology of ischemic disease. Alternatively spliced transcript variants encoding different isoforms have been identified for this gene.

## Verified picture



Western blot analysis with HIF1A antibody diluted at 1:1000



Immunohistochemistry of paraffin-embedded Human breast cancer with HIF1A antibody diluted at 1:100