

## Anti-Lamin B2 Monoclonal Antibody

Cat: AC50447

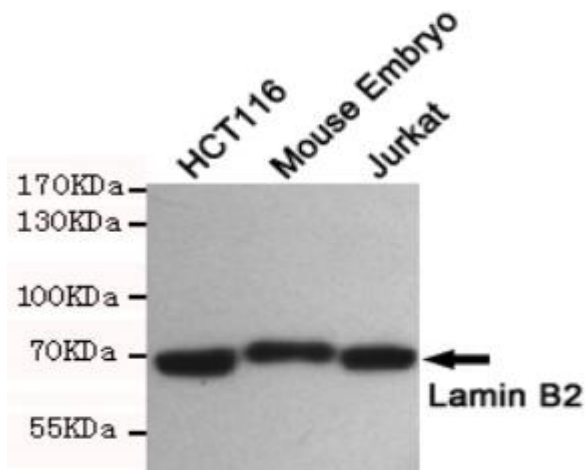
### Summary:

- 【Product name】**: Anti-Lamin B2 antibody    **【Source】** : Mouse  
**【Isotype】** : IgG1    **【Species reactivity】** : Human, Mouse  
**【Swiss Prot】** : Q03252    **【Gene ID】** : 84823  
**【Calculated】** : MW: 68kDa    **【Observed】** : MW: 70kDa  
**【Purification】** : Affinity purification  
**【Tested applications】** : WB  
**【Recommended dilution】** : WB 1:500.  
**【WB Positive sample】** : HCT116, Mouse Embryo and Jurkat cell  
**【Subcellular location】** : Lipid-anchor Nucleoplasmic side Nucleus inner membrane  
**【Immunogen】** : Recombinant human Lamin B2 protein.  
**【Storage】** : Shipped at 4°C. Upon delivery aliquot and store at -20°C

### Background:

Lamins are components of the nuclear lamina, a fibrous layer on the nucleoplasmic side of the inner nuclear membrane, which is thought to provide a framework for the nuclear envelope and may also interact with chromatin.

## Verified picture



Western blot analysis with Lamin B2  
antibody diluted at 1:500