

Anti-KMT3C/SMYD2 Monoclonal Antibody

Cat: AC50452

Summary:

【Product name】 : Anti-KMT3C/SMYD2 **【Source】** : Mouse

antibody

【Isotype】 : IgG2b

【Species reactivity】 : Human Mouse

【Swiss Prot】 : Q9NRG4

【Gene ID】 : 56950

【Calculated】 : MW:50kDa

【Observed】 : MW:47kDa

【Purification】 : Affinity purification

【Tested applications】 : WB

【Recommended dilution】 : WB 1:500-2000.

【WB Positive sample】 : 3T3 HT1080 A431 and Jurkat cell lysates

【Subcellular location】 : Cytoplasm Nucleus cytosol

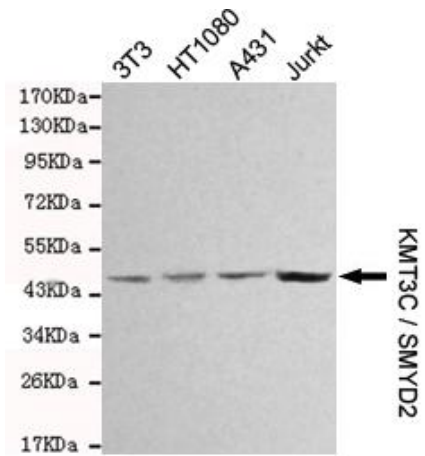
【Immunogen】 : Purified recombinant human KMT3C / SMYD2 protein fragments expressed in E.coli.

【Storage】 : Shipped at 4°C. Upon delivery aliquot and store at -20°C

Background:

SET domain-containing proteins, such as SMYD2, catalyze lysine methylation (Brown et al., 2006 [PubMed 16805913]).

Verified picture



Western blot analysis with KMT3C/SMYD2
antibody diluted at 1:1000