

Anti-PP2A α and β Monoclonal Antibody

Cat: AC50477

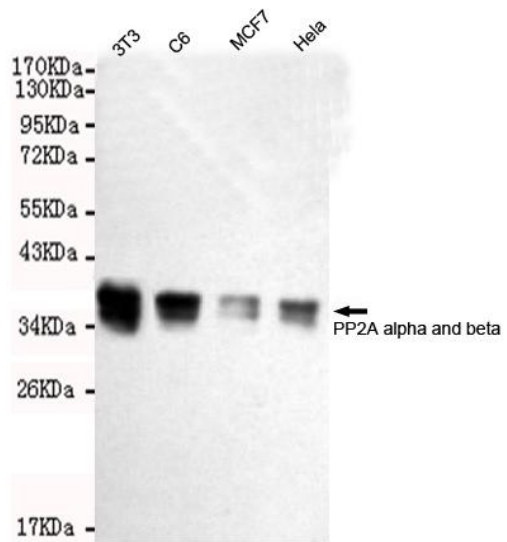
Summary:

- 【Product name】** : Anti-PP2A α and β antibody **【Source】** : Mouse
- 【Isotype】** : IgG2a **【Species reactivity】** : Human Mouse Rat
- 【Swiss Prot】** : P62714 **【Gene ID】** : 5516
- 【Calculated】** : MW:36kDa **【Observed】** : MW:39kDa
- 【Purification】** : Affinity purification
- 【Tested applications】** : WB, IP
- 【Recommended dilution】** : WB 1:1000-3000.
- 【WB Positive sample】** : HeLa,MCF7,C6 and 3T3 cell lysates
- 【Subcellular location】** : Chromosome Cytoplasm Nucleus centromere cytoskeleton spindle pole
- 【Immunogen】** : Purified recombinant human full length PP2A beta protein expressed in E.coli
- 【Storage】** : Shipped at 4°C. Upon delivery aliquot and store at -20°C

Background:

This gene encodes the phosphatase 2A catalytic subunit. Protein phosphatase 2A is one of the four major Ser/Thr phosphatases, and it is implicated in the negative control of cell growth and division. It consists of a common heteromeric core enzyme, which is composed of a catalytic subunit and a constant regulatory subunit, that associates with a variety of regulatory subunits. This gene encodes a beta isoform of the catalytic subunit.

Verified picture



Western blot analysis with PP2A α and β antibody diluted at 1:2000