

Anti-RhoA Polyclonal Antibody

Cat: AC50638

Summary:

【Product name】 : Anti-RhoA antibody

【Source】 : Rabbit

【Isotype】 : IgG

【Species reactivity】 : Human Mouse Rat

【Swiss Prot】 : P61586

【Gene ID】 : 387

【Calculated】 : MW:22kDa

【Observed】 : MW:21KDa

【Purification】 : Affinity purification

【Tested applications】 : WB IHC IF

【Recommended dilution】 : WB 1:500-2000. IHC 1:50-200. IF 1:50-200

【WB Positive sample】 :NIH3T3,Mouse lung

【IF Positive sample】 :NIH3T3

【Subcellular location】 : Cytoplasm Cell membrane

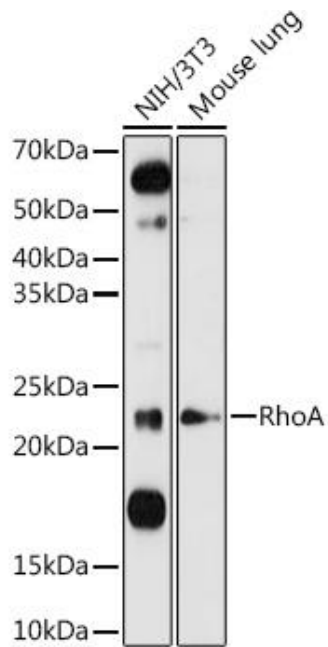
【Immunogen】 : A synthetic peptide of human RhoA

【Storage】 : Store at -20° C. Avoid freeze / thaw cycles.

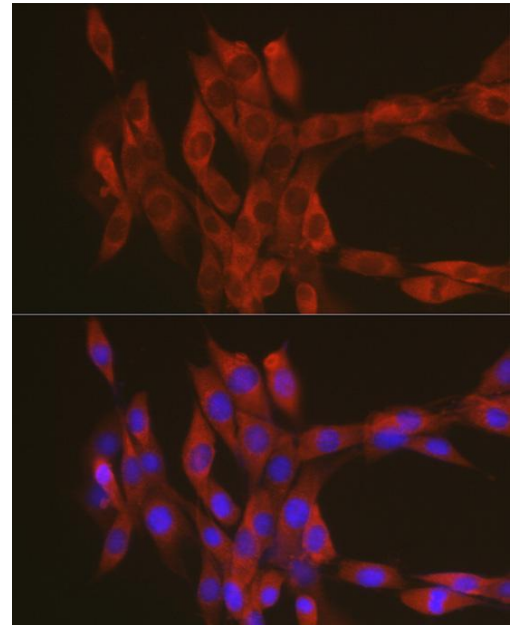
Background:

This gene encodes a member of the Rho family of small GTPases, which cycle between inactive GDP-bound and active GTP-bound states and function as molecular switches in signal transduction cascades. Rho proteins promote reorganization of the actin cytoskeleton and regulate cell shape, attachment, and motility. Overexpression of this gene is associated with tumor cell proliferation and metastasis. Multiple alternatively spliced variants have been identified.

Verified picture



Western blot analysis with RhoA antibody diluted at 1:1000; Lane: NIH/3T3, Mouse lung



Immunofluorescence analysis of NIH/3T3 using RhoA antibody diluted at 1:100.