

Anti-AKT2 Polyclonal Antibody

Cat: AC50663

Summary:

【Product name】 : Anti-AKT2 antibody

【Source】 : Rabbit

【Isotype】 : IgG

【Species reactivity】 : Human, Mouse, Rat

【Swiss Prot】 : P31751

【Gene ID】 : 208

【Calculated】 : MW: 56kDa

【Observed】 : MW: 63kDa

【Purification】 : Affinity purification

【Tested applications】 : WB IHC IF

【Recommended dilution】 : WB 1:500-2000. IHC 1:50-200. IF 1:50-200.

【WB Positive sample】 : NIH3T3,Hela

【IHC Positive sample】 : Human pancreatic cancer

【Subcellular location】 : Cell membrane Cytoplasm Early endosome Nucleus Peripheral membrane protein.

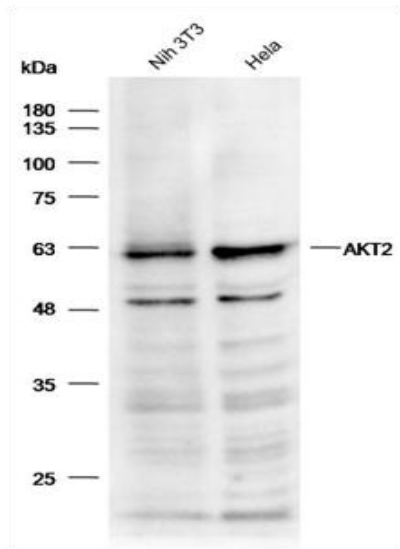
【Immunogen】 : A synthetic peptide of human AKT2.

【Storage】 : Shipped at 4°C. Upon delivery aliquot and store at -20°C

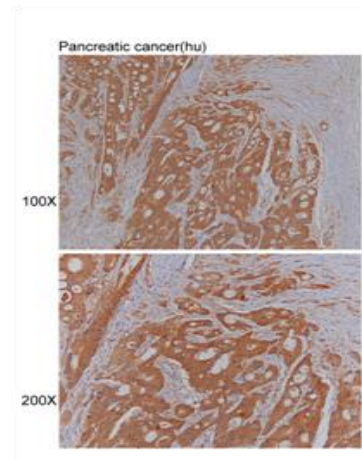
Background:

This gene is a putative oncogene encoding a protein belonging to a subfamily of serine/threonine kinases containing SH2-like (Src homology 2-like) domains. The gene was shown to be amplified and overexpressed in 2 of 8 ovarian carcinoma cell lines and 2 of 15 primary ovarian tumors. Overexpression contributes to the malignant phenotype of a subset of human ductal pancreatic cancers. The encoded protein is a general protein kinase capable of phosphorylating several known proteins.

Verified picture



Western blot analysis with AKT2 antibody
diluted at 1:1000



Immunohistochemistry of paraffin-embedded
Human pancreatic cancer with AKT2 antibody
diluted at 1:100