

Anti-DES Polyclonal Antibody

Cat: AC50718

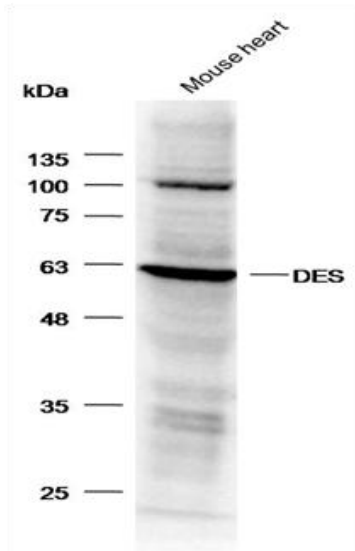
Summary:

- 【Product name】** : Anti-DES antibody **【Source】** : Rabbit
【Isotype】 : IgG **【Species reactivity】** : Human, Mouse, Rat
【Swiss Prot】 : P17661 **【Gene ID】** : 1674
【Calculated】 : MW: 54kDa **【Observed】** : MW: 63kDa
【Purification】 : Affinity purification
【Tested applications】 : WB IHC
【Recommended dilution】 : WB 1:500-2000. IHC 1:50-100.
【WB Positive sample】 : Mouse heart
【IHC Positive sample】 : Human colorectal cancer
【Subcellular location】 : Cell membrane Cytoplasm sarcolemma.
【Immunogen】 : Recombinant protein of human DES.
【Storage】 : Shipped at 4°C. Upon delivery aliquot and store at -20°C

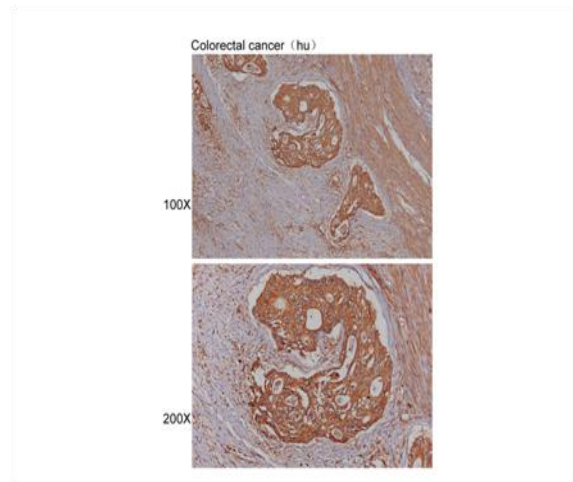
Background:

This gene encodes a muscle-specific class III intermediate filament. Homopolymers of this protein form a stable intracytoplasmic filamentous network connecting myofibrils to each other and to the plasma membrane. Mutations in this gene are associated with desmin-related myopathy, a familial cardiac and skeletal myopathy (CSM), and with distal myopathies.

Verified picture



Western blot analysis with DES antibody
diluted at 1:1000



Immunohistochemistry of paraffin-embedded
Human colorectal cancer with DES antibody
diluted at 1:100