

# Anti-ILK Polyclonal Antibody

Cat: AC50741

## Summary:

**【Product name】** : Anti-ILK antibody

**【Source】** : Rabbit

**【Isotype】** : IgG

**【Species reactivity】** : Human, Mouse, Rat

**【Swiss Prot】** : Q13418

**【Gene ID】** : 3611

**【Calculated】** : MW: 51kDa

**【Observed】** : MW: 48kDa

**【Purification】** : Affinity purification

**【Tested applications】** : WB IHC

**【Recommended dilution】** : WB 1:500-1000. IHC 1:50-100.

**【WB Positive sample】** : Hela

**【IHC Positive sample】** : Mouse kidney tissue

**【Subcellular location】** : Cell junction Cell membrane Cell projection Cytoplasm Cytoplasmic side

Peripheral membrane protein focal adhesion lamellipodium myofibril sarcomere.

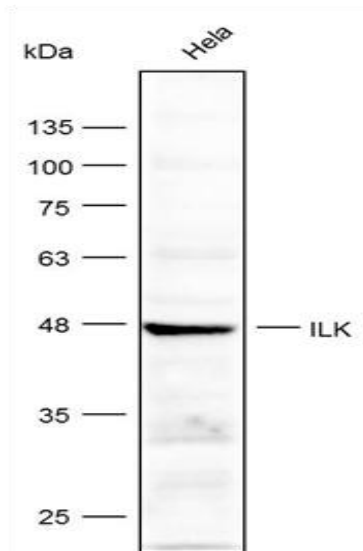
**【Immunogen】** : Recombinant protein of human ILK.

**【Storage】** : Shipped at 4°C. Upon delivery aliquot and store at -20°C

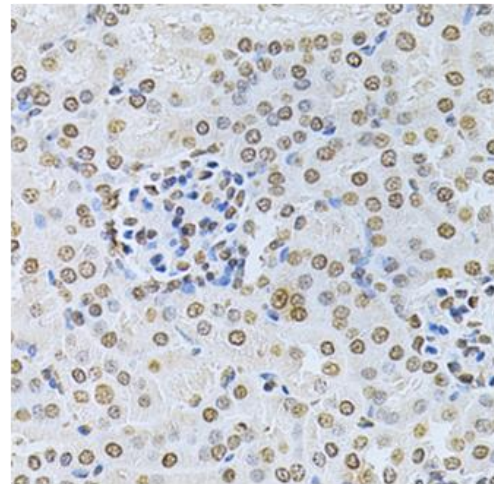
## Background:

This gene encodes a protein with a kinase-like domain and four ankyrin-like repeats. The encoded protein associates at the cell membrane with the cytoplasmic domain of beta integrins, where it regulates integrin-mediated signal transduction. Activity of this protein is important in the epithelial to mesenchymal transition, and over-expression of this gene is implicated in tumor growth and metastasis. Alternative splicing results in multiple transcript variants.

## Verified picture



Western blot analysis with ILK antibody  
diluted at 1:1000



Immunohistochemistry of paraffin-embedded  
Mouse kidney tissue with ILK antibody diluted  
at 1:200