

Anti-RPA1 Rabbit Polyclonal Antibody

Cat: AC50776

Basic information

Source: Rabbit

Swiss Prot: P27694

Species reactivity: Human Mouse Rat

Gene ID:6117

Isotype: IgG

Tested applications: WB IHC

Purification: Affinity purification

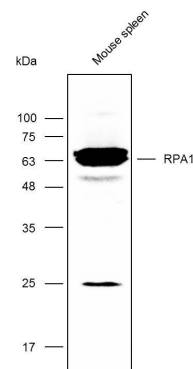
Immunogen: Recombinant protein of human RPA1

MW(kDa):68kDa

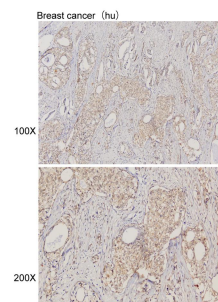
Storage: Store at -20°C. Avoid freeze / thaw cycles.
Buffer: PBS with 0.02% sodium azide, 50% glycerol, pH7.3.

Background:

RPA1 (replication protein A1, 70kDa) is a protein-coding gene. Diseases associated with RPA1 include xeroderma pigmentosum, group a, and werner syndrome. GO annotations related to this gene include chromatin binding and single-stranded DNA binding.



Western blot analysis with Anti-RPA1 Rabbit Polyclonal Antibody diluted at 1:1,000



Immunohistochemistry of paraffin-embedded breast cancer (hu) using Anti-RPA1 Rabbit Polyclonal Antibody at dilution of 1:100 (x100 lens, x200 lens).