

Anti-TIMM23 Rabbit Polyclonal Antibody

Cat: AC50799

Basic information

Source: Rabbit

Species reactivity: Human

Isotype: IgG

Purification: Affinity purification

MW(kDa):22kDa

Background:

The protein encoded by this gene is part of a complex located in the inner mitochondrial membrane that mediates the transport of transit peptide-containing proteins across the membrane. Multiple transcript variants, one protein-coding and others not protein-coding, have been found for this gene.

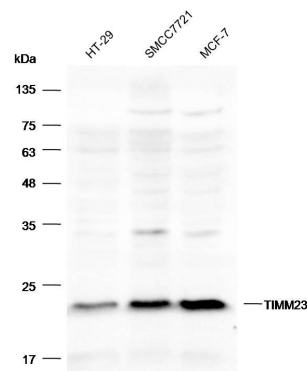
Swiss Prot:O14925

Gene ID:100287932

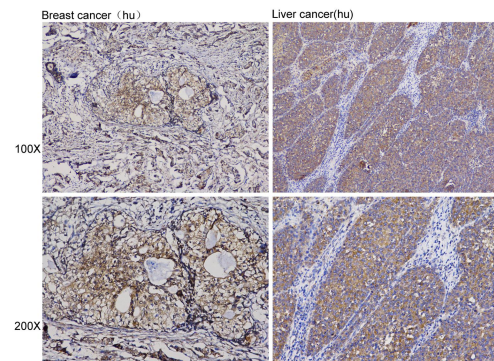
Tested applications: WB

Immunogen:Recombinant protein of human TIMM23

Storage: Store at -20°C. Avoid freeze / thaw cycles.
Buffer: PBS with 0.02% sodium azide, 50% glycerol, pH7.3.



Western blot analysis with Anti-TIMM23 Rabbit Polyclonal Antibody diluted at 1:1,000



Immunohistochemistry of paraffin-embedded breast cancer (hu) and liver cancer(hu) using Anti-TIMM23 Rabbit Polyclonal Antibody at dilution of 1:100 (x100 lens、x200 lens).