

Anti-ROBO2 Rabbit Polyclonal Antibody

Cat: AC50808

Basic information

Source: Rabbit

Swiss Prot:Q9HCK4

Species reactivity: Human Mouse Rat

Gene ID:6092

Isotype: IgG

Tested applications: WB

Purification: Affinity purification

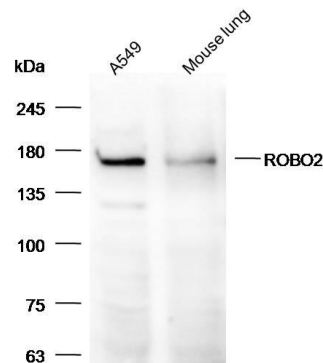
Immunogen: Recombinant protein of human ROBO2

MW(kDa):130/151/153kDa

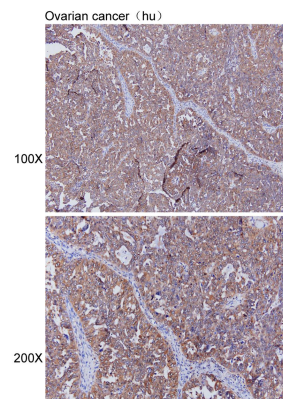
Storage: Store at -20°C. Avoid freeze / thaw cycles.
Buffer: PBS with 0.02% sodium azide, 50% glycerol, pH7.3.

Background:

The protein encoded by this gene belongs to the ROBO family, part of the immunoglobulin superfamily of proteins that are highly conserved from fly to human. The encoded protein is a transmembrane receptor for the slit homolog 2 protein and functions in axon guidance and cell migration. Mutations in this gene are associated with vesicoureteral reflux, characterized by the backward flow of urine from the bladder into the ureters or the kidney. Alternative splicing results in multiple transcript variants.



Western blot analysis with Anti-ROBO2 Rabbit Polyclonal Antibody diluted at 1:1,000



Immunohistochemistry of paraffin-embedded ovarian cancer (hu) using Anti-ROBO2 Rabbit Polyclonal Antibody at dilution of 1:100 (x100 lens, x200 lens).