

Anti-CSNK2A1 Polyclonal Antibody

Cat: AC50831

Summary:

【 Product name 】 : Anti-CSNK2A1 **【 Source 】** : Rabbit
antibody

【 Isotype 】 : IgG

【 Species reactivity 】 : Human, Mouse, Rat

【 Swiss Prot 】 : P68400

【 Gene ID 】 : 1457

【 Calculated 】 : MW: 45kDa

【 Observed 】 : MW: 42kDa

【 Purification 】 : Affinity purification

【 Tested applications 】 : WB IHC

【 Recommended dilution 】 : WB 1:1000-4000. IHC 1:50-200.

【 WB Positive sample 】 : Mouse liver, HT-29

【 IHC Positive sample 】 : Human colorectal cancer

【 Subcellular location 】 : Nucleus.

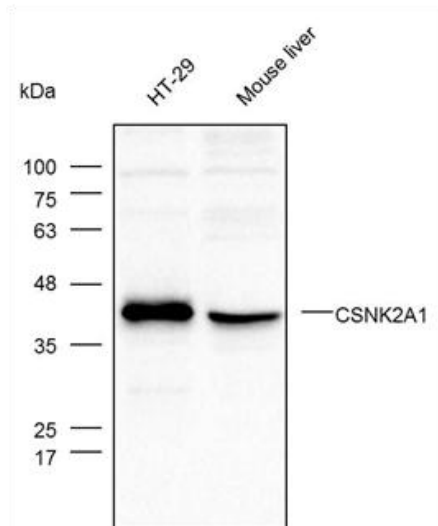
【 Immunogen 】 : Recombinant protein of human CSNK2A1.

【 Storage 】 : Shipped at 4°C. Upon delivery aliquot and store at -20°C

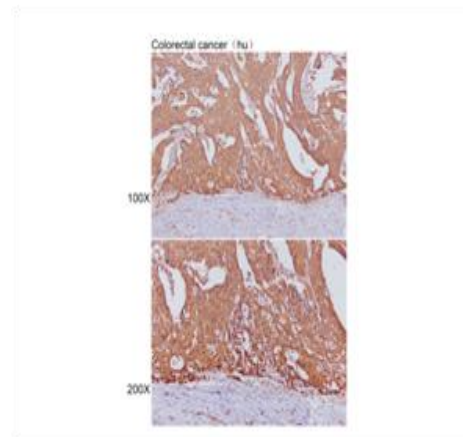
Background:

Casein kinase II is a serine/threonine protein kinase that phosphorylates acidic proteins such as casein. It is involved in various cellular processes, including cell cycle control, apoptosis, and circadian rhythm. The kinase exists as a tetramer and is composed of an alpha, an alpha-prime, and two beta subunits. The alpha subunits contain the catalytic activity while the beta subunits undergo autophosphorylation. The protein encoded by this gene represents the alpha subunit. While this gene is found on chromosome 20, a related transcribed pseudogene is found on chromosome 11. Three transcript variants encoding two different proteins have been found for this gene.

Verified picture



Western blot analysis with CSNK2A1 antibody diluted at 1:1000



Immunohistochemistry of paraffin-embedded Human colorectal cancer with CSNK2A1 antibody diluted at 1:100