

Anti-TREML1 Polyclonal Antibody

Cat: AC50936

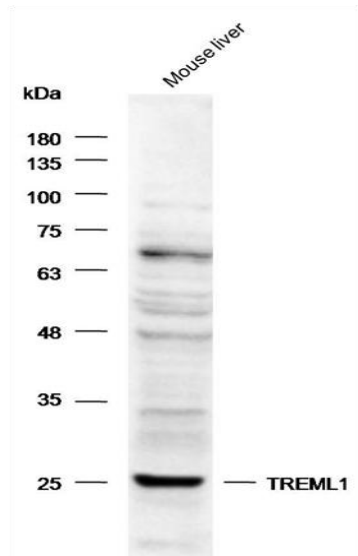
Summary:

- 【Product name】** : Anti-TREML1 antibody **【Source】** : Rabbit
【Isotype】 : IgG **【Species reactivity】** : Mouse, Rat
【Swiss Prot】 : Q86YW5 **【Gene ID】** : 340205
【Calculated】 : MW: 33kDa **【Observed】** : MW: 26kDa
【Purification】 : Affinity purification
【Tested applications】 : WB IHC
【Recommended dilution】 : WB 1:500-2000. IHC 1:50-200.
【WB Positive sample】 : Mouse liver
【IHC Positive sample】 : Human liver cancer
【Subcellular location】 : Cell membrane Cytoplasm Single-pass type I membrane protein.
【Immunogen】 : Recombinant protein of human TREML1.
【Storage】 : Shipped at 4°C. Upon delivery aliquot and store at -20°C

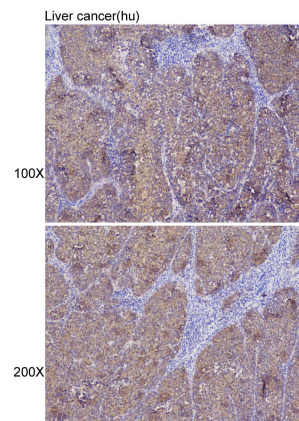
Background:

This gene encodes a member of the triggering receptor expressed on myeloid cells-like (TREM) family. The encoded protein is a type 1 single Ig domain orphan receptor localized to the alpha-granule membranes of platelets. The encoded protein is involved in platelet aggregation, inflammation, and cellular activation and has been linked to Gray platelet syndrome. Alternative splicing results in multiple transcript variants.

Verified picture



Western blot analysis with ERAL1 antibody
diluted at 1:1000



Immunohistochemistry of paraffin-embedded
Human liver cancer with ERAL1 antibody
diluted at 1:100