

Anti-RPL18 Rabbit Polyclonal Antibody

Cat:AC51019

Basic information

Source: Rabbit

Swiss Prot: Q07020

Species reactivity: Human,Mouse,Rat

Gene ID:6141

Isotype: IgG

Tested applications: WB

Purification: Affinity purification

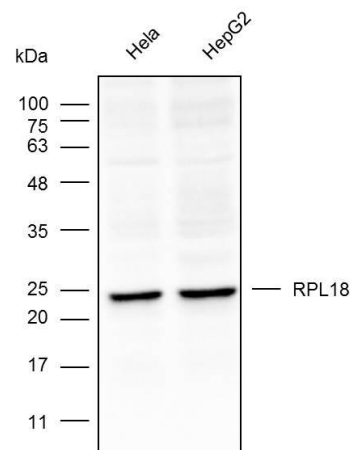
Immunogen:Recombinant protein of human RPL18

MW(kDa):22kDa

Storage: Store at -20°C. Avoid freeze / thaw cycles.
Buffer: PBS with 0.02% sodium azide, 50% glycerol, pH7.3.

Background:

Ribosomes, the organelles that catalyze protein synthesis, consist of a small 40S subunit and a large 60S subunit. Together these subunits are composed of 4 RNA species and approximately 80 structurally distinct proteins. This gene encodes a member of the L18E family of ribosomal proteins that is a component of the 60S subunit. As is typical for genes encoding ribosomal proteins, there are multiple processed pseudogenes of this gene dispersed through the genome. Alternatively spliced transcript variants encoding multiple isoforms have been observed for this gene.



Western blot analysis with K002077P diluted at 1:1,000