

Anti-IRF3 Polyclonal Antibody

Cat: AC51062

Summary:

【Product name】 : Anti-IRF3 antibody

【Source】 : Rabbit

【Isotype】 : IgG

【Species reactivity】 : Human

【Swiss Prot】 : Q14653

【Gene ID】 : 3661

【Calculated】 : MW:12/16/33/47/49kDa

【Observed】 : MW:55kDa

【Purification】 : Affinity purification

【Tested applications】 : WB IHC CHIP

【Recommended dilution】 : WB 1:500-2000. IHC 1:50-200. CHIP 1:20-100.

【WB Positive sample】 : MCF7,THP-1,HT-29

【IHC Positive sample】 : Human lung cancer

【Subcellular location】 : Cytoplasm Nucleus

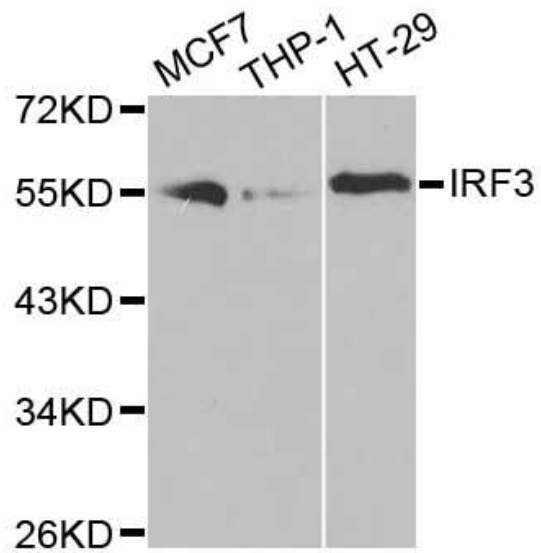
【Immunogen】 : Recombinant protein of human IRF3

【Storage】 : Shipped at 4°C. Upon delivery aliquot and store at -20°C

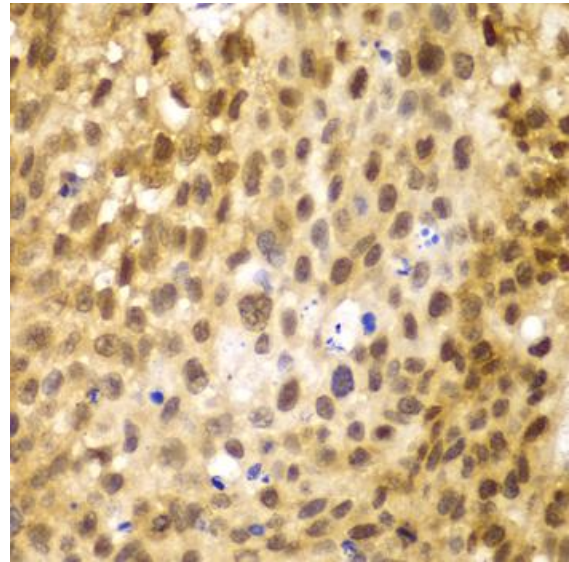
Background:

This gene encodes a member of the interferon regulatory transcription factor (IRF) family. The encoded protein is found in an inactive cytoplasmic form that upon serine/threonine phosphorylation forms a complex with CREBBP. This complex translocates to the nucleus and activates the transcription of interferons alpha and beta, as well as other interferon-induced genes. Alternatively spliced transcript variants encoding multiple isoforms have been observed for this gene.

Verified picture



Western blot analysis with IRF3 antibody diluted at 1:1000



Immunohistochemistry of paraffin-embedded Human lung cancer with IRF3 antibody diluted at 1:100