

Anti-MMP9 Rabbit Polyclonal Antibody

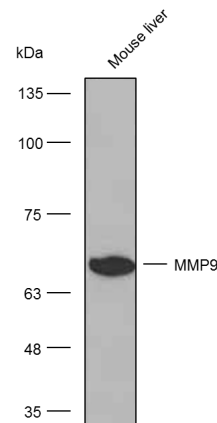
Cat: AC51067

Basic information

Source: Rabbit**Swiss Prot:** P14780**Species reactivity:** Human,Mouse,Rat**Gene ID:**4318**Isotype:** IgG**Tested applications:** WB IHC**Purification:** Affinity purification**Immunogen:** Synthetic peptide conjugated to KLH**MW(kDa):**78kDa**Storage:** Shipped at 4°C. Upon delivery aliquot and store at -20°C. Avoid freeze / thaw cycles.

Background:

Proteins of the matrix metalloproteinase (MMP) family are involved in the breakdown of extracellular matrix in normal physiological processes, such as embryonic development, reproduction, and tissue remodeling, as well as in disease processes, such as arthritis and metastasis. Most MMP's are secreted as inactive proproteins which are activated when cleaved by extracellular proteinases. The enzyme encoded by this gene degrades type IV and V collagens. Studies in rhesus monkeys suggest that the enzyme is involved in IL-8-induced mobilization of hematopoietic progenitor cells from bone marrow, and murine studies suggest a role in tumor-associated tissue remodeling.



Western blot analysis with Anti-MMP9 Rabbit Polyclonal
Antibody diluted at 1:1,000