

Anti-PARK2 Polyclonal Antibody

Cat: AC51074

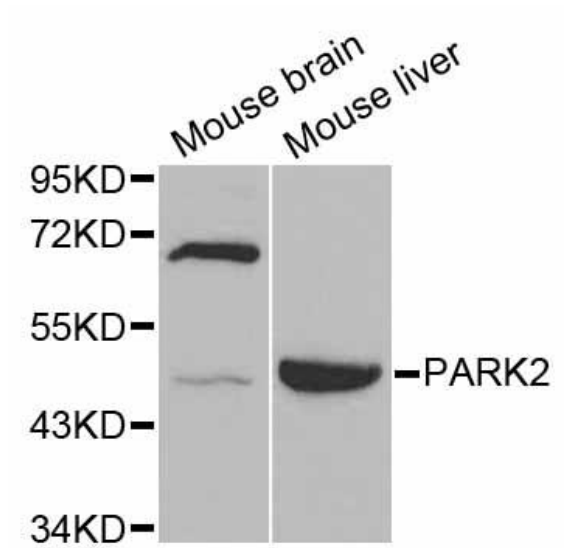
Summary:

- 【Product name】** : Anti-PARK2 antibody **【Source】** : Rabbit
【Isotype】 : IgG **【Species reactivity】** : Human Mouse
【Swiss Prot】 : O60260 **【Gene ID】** : 5071
【Calculated】 : MW:52kDa **【Observed】** : MW:50kDa
【Purification】 : Affinity purification
【Tested applications】 : WB, IF
【Recommended dilution】 : WB 1:500-2000. IF 1:50-200.
【WB Positive sample】 : Mouse brain, Mouse liver
【Subcellular location】 : Cytoplasm Endoplasmic reticulum Mitochondrion Nucleus cytosol
【Immunogen】 : Recombinant protein of human PARK2
【Storage】 : Shipped at 4°C. Upon delivery aliquot and store at -20°C

Background:

The precise function of this gene is unknown; however, the encoded protein is a component of a multiprotein E3 ubiquitin ligase complex that mediates the targeting of substrate proteins for proteasomal degradation. Mutations in this gene are known to cause Parkinson disease and autosomal recessive juvenile Parkinson disease. Alternative splicing of this gene produces multiple transcript variants encoding distinct isoforms. Additional splice variants of this gene have been described but currently lack transcript support.

Verified picture



Western blot analysis with PARK2 antibody
diluted at 1:1000