

Anti-TLR2 Rabbit Polyclonal Antibody

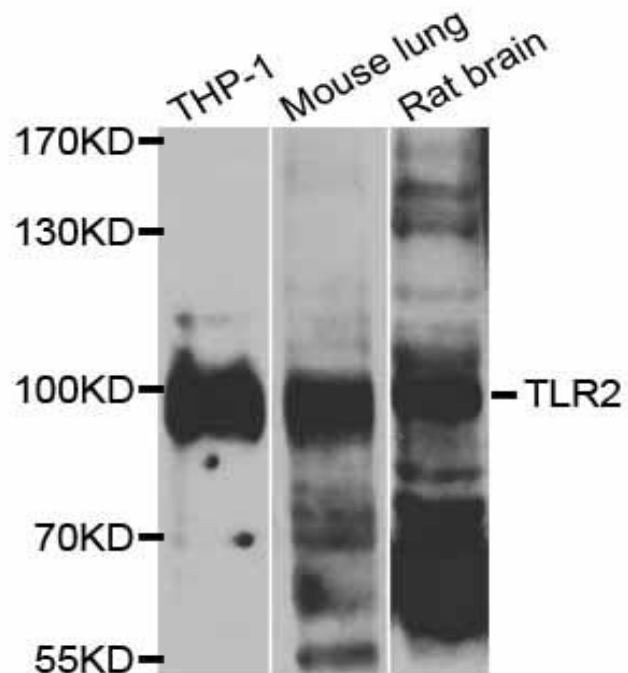
Cat:AC51088

Basic information

Source: Rabbit**Species reactivity:** Human, Mouse, Rat**Isotype:** IgG**Purification:** Affinity purification**MW(kDa):** 89kDa

Background:

The protein encoded by this gene is a member of the Toll-like receptor (TLR) family which plays a fundamental role in pathogen recognition and activation of innate immunity. TLRs are highly conserved from *Drosophila* to humans and share structural and functional similarities. This protein is a cell-surface protein that can form heterodimers with other TLR family members to recognize conserved molecules derived from microorganisms known as pathogen-associated molecular patterns (PAMPs). Activation of TLRs by PAMPs leads to an up-regulation of signaling pathways to modulate the host's inflammatory response. This gene is also thought to promote apoptosis in response to bacterial lipoproteins. This gene has been implicated in the pathogenesis of several autoimmune diseases. Alternative splicing results in multiple transcript variants.

Swiss Prot: O60603**Gene ID:**7097**Tested applications:** WB, IHC**Immunogen:** A synthetic peptide of human TLR2**Storage:** Store at -20°C. Avoid freeze / thaw cycles.
Buffer: PBS with 0.02% sodium azide, 50% glycerol, pH7.3.

Western blot analysis with Anti-TLR2 Polyclonal Antibody diluted at 1:1,000