

Anti-IL1B Polyclonal Antibody

Cat: AC51121

Summary:

【Product name】 : Anti-IL1B antibody

【Source】 : Rabbit

【Isotype】 : IgG

【Species reactivity】 : Human Mouse Rat

【Swiss Prot】 : P01584

【Gene ID】 : 3553

【Calculated】 : MW:17/31kDa

【Observed】 : MW:40kDa

【Purification】 : Affinity purification

【Tested applications】 : WB IHC IF

【Recommended dilution】 : WB 1:500-2000. IHC 1:50-200. IF 1:50-200.

【WB Positive sample】 : Mouse spleen,Mouse uterus,Mouse thymus

【IHC Positive sample】 :

【Subcellular location】 : Cytoplasm Cytoplasmic vesicle Lysosome Secreted autophagosome cytosol
exosome

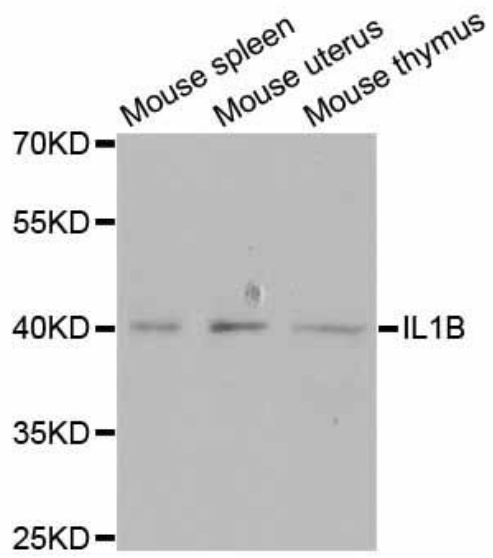
【Immunogen】 : Recombinant protein of human IL1B

【Storage】 : Shipped at 4°C. Upon delivery aliquot and store at -20°C

Background:

The protein encoded by this gene is a member of the interleukin 1 cytokine family. This cytokine is produced by activated macrophages as a proprotein, which is proteolytically processed to its active form by caspase 1 (CASP1/ICE). This cytokine is an important mediator of the inflammatory response, and is involved in a variety of cellular activities, including cell proliferation, differentiation, and apoptosis. The induction of cyclooxygenase-2 (PTGS2/COX2) by this cytokine in the central nervous system (CNS) is found to contribute to inflammatory pain hypersensitivity. This gene and eight other interleukin 1 family genes form a cytokine gene cluster on chromosome 2.

Verified picture



Western blot analysis with IL1B antibody
diluted at 1:1000