

Anti-PINK1 Rabbit Polyclonal Antibody

Cat: AC51138

Basic information

Source: Rabbit

Species reactivity: Human, Mouse, Rat

Isotype: IgG

Purification: Affinity purification

MW(kDa): 63kDa

Background:

This gene encodes a serine/threonine protein kinase that localizes to mitochondria. It is thought to protect cells from stress-induced mitochondrial dysfunction. Mutations in this gene cause one form of autosomal recessive early-onset Parkinson disease.

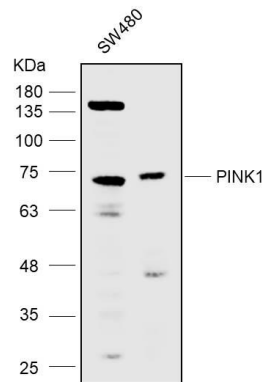
Swiss Prot: Q9BXM7

Gene ID: 65018

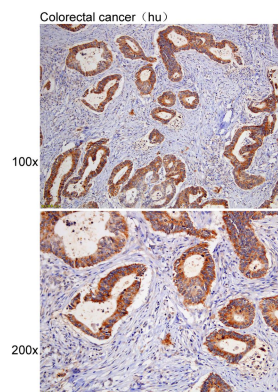
Tested applications: WB IHC

Immunogen: A synthetic peptide of human PINK1

Storage: Shipped at 4°C. Upon delivery aliquot and store at -20°C. Avoid freeze / thaw cycles.



Western blot analysis with anti-PINK1 Rabbit Polyclonal Antibody diluted



1:1,000

Immunohistochemistry of paraffin-embedded Colorectal cancer(hu) using anti-PINK1 Rabbit Polyclonal Antibody at dilution of 1:100 (x100 lens、x200 lens).