

Anti-EGFR Polyclonal Antibody

Cat: AC51171

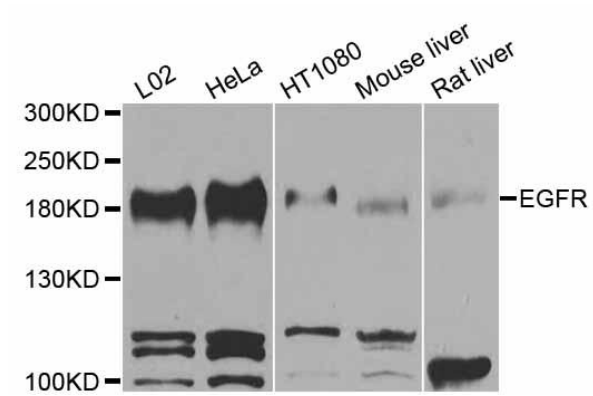
Summary:

- 【Product name】** : Anti-EGFR antibody **【Source】** : Rabbit
- 【Isotype】** : IgG **【Species reactivity】** : Human Mouse Rat
- 【Swiss Prot】** : P00533 **【Gene ID】** : 1956
- 【Calculated】** : MW:134kDa **【Observed】** : MW:200kDa
- 【Purification】** : Affinity purification
- 【Tested applications】** : WB, IHC, IF
- 【Recommended dilution】** : WB 1:500-2000. IHC 1:50-200. IF 1:50-200.
- 【WB Positive sample】** : LO2,HeLa,HT-1080,Mouse liver,Rat liver
- 【IHC Positive sample】** : Human lung cancer
- 【Subcellular location】** : Cell membrane Endoplasmic reticulum membrane Endosome Endosome membrane Golgi apparatus membrane Nucleus membrane Nucleus Secreted Single-pass type I membrane protein
- 【Immunogen】** : A synthetic peptide of human EGFR
- 【Storage】** : Shipped at 4°C. Upon delivery aliquot and store at -20°C

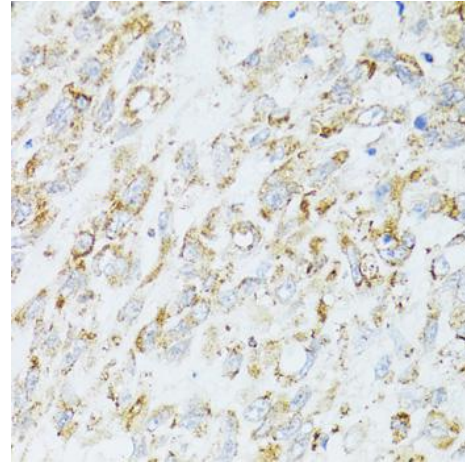
Background:

The protein encoded by this gene is a transmembrane glycoprotein that is a member of the protein kinase superfamily. This protein is a receptor for members of the epidermal growth factor family. EGFR is a cell surface protein that binds to epidermal growth factor. Binding of the protein to a ligand induces receptor dimerization and tyrosine autophosphorylation and leads to cell proliferation. Mutations in this gene are associated with lung cancer.

Verified picture



Western blot analysis with EGFR antibody diluted at 1:1000



Immunohistochemistry of paraffin-embedded Human lung cancer with EGFR antibody diluted at 1:100