

Anti-SEC13 Rabbit Polyclonal Antibody

Cat: AC51184

Basic information

Source: Rabbit

Species reactivity: Human, Mouse, Rat

Isotype: IgG

Purification: Affinity purification

MW(kDa): 36kDa

Background:

The protein encoded by this gene belongs to the SEC13 family of WD-repeat proteins. It is a constituent of the endoplasmic reticulum and the nuclear pore complex. It has similarity to the yeast SEC13 protein, which is required for vesicle biogenesis from endoplasmic reticulum during the transport of proteins. Multiple alternatively spliced transcript variants have been found.

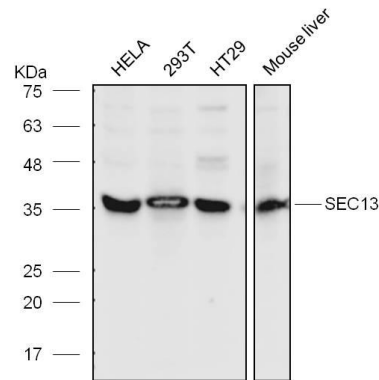
Swiss Prot: P55735

Gene ID: 6396

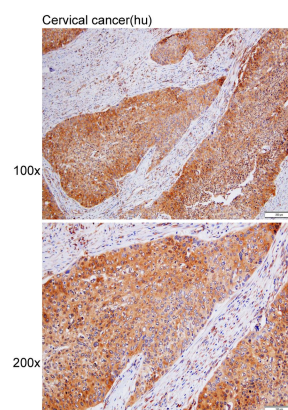
Tested applications: WB IHC

Immunogen: A synthetic peptide of human SEC13

Storage: Shipped at 4°C. Upon delivery aliquot and store at -20°C. Avoid freeze / thaw cycles.



Western blot analysis with anti-SEC13 Rabbit Polyclonal Antibody diluted at 1:1,000



Immunohistochemistry of paraffin-embedded Cervical cancer(hu) using anti-SEC13 Rabbit Polyclonal Antibody at dilution of 1:100 (x100 lens, x200 lens).