

## Anti-RHEB Polyclonal Antibody

Cat: AC51194

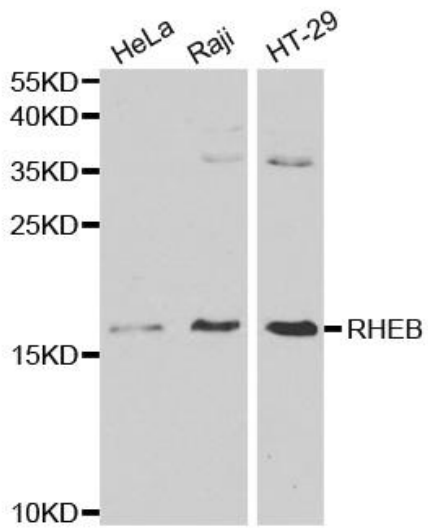
### Summary:

- |  |   |
|--|---|
| <b>【Product name】</b> : Anti-RHEB antibody   | <b>【Source】</b> : Rabbit                  |
| <b>【Isotype】</b> : IgG   | <b>【Species reactivity】</b> : Human Mouse |
| <b>【Swiss Prot】</b> : Q15382   | <b>【Gene ID】</b> : 6009                   |
| <b>【Calculated】</b> : MW:20kDa   | <b>【Observed】</b> : MW:17kDa              |
| <b>【Purification】</b> : Affinity purification  |   |
| <b>【Tested applications】</b> : WB  |   |
| <b>【Recommended dilution】</b> : WB 1:500-2000.   |   |
| <b>【WB Positive sample】</b> : HeLa,Raji,HT29   |   |
| <b>【Subcellular location】</b> : Cytoplasm Endoplasmic reticulum Golgi apparatus Membrane |   |
| <b>【Immunogen】</b> : Recombinant protein of human RHEB                                   |   |
| <b>【Storage】</b> : Shipped at 4°C. Upon delivery aliquot and store at -20°C              |   |

### Background:

This gene is a member of the small GTPase superfamily and encodes a lipid-anchored, cell membrane protein with five repeats of the RAS-related GTP-binding region. This protein is vital in regulation of growth and cell cycle progression due to its role in the insulin/TOR/S6K signaling pathway. The protein has GTPase activity and shuttles between a GDP-bound form and a GTP-bound form, and farnesylation of the protein is required for this activity. Three pseudogenes have been mapped, two on chromosome 10 and one on chromosome 22.

## Verified picture



Western blot analysis with RHEB antibody  
diluted at 1:1000