

## Anti-SEC61A1 Polyclonal Antibody

Cat: AC51196

### Summary:

**【 Product name 】** : Anti-SEC61A1 **【Source】** : Rabbit  
antibody

**【Isotype】** : IgG

**【Species reactivity】** : Human Mouse Rat

**【Swiss Prot】** : P61619

**【Gene ID】** : 29927

**【Calculated】** : MW:52kDa

**【Observed】** : MW:50kDa

**【Purification】** : Affinity purification

**【Tested applications】** : WB

**【Recommended dilution】** : WB 1:500-2000.

**【WB Positive sample】** : 293T,LO2,A549,Mouse pancreas,Rat liver

**【Subcellular location】** : Endoplasmic reticulum membrane Multi-pass membrane protein

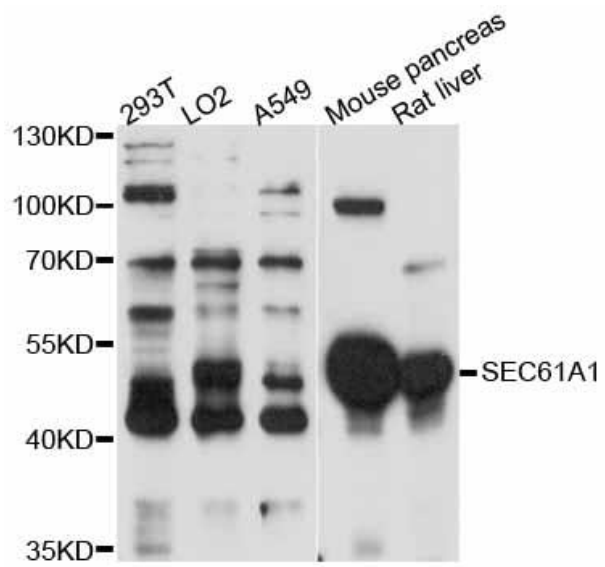
**【Immunogen】** : Recombinant protein of human SEC61A1

**【Storage】** : Shipped at 4°C. Upon delivery aliquot and store at -20°C

### Background:

The protein encoded by this gene belongs to the SECY/SEC61- alpha family. It appears to play a crucial role in the insertion of secretory and membrane polypeptides into the endoplasmic reticulum. This protein found to be tightly associated with membrane-bound ribosomes, either directly or through adaptor proteins. This gene encodes an alpha subunit of the heteromeric SEC61 complex, which also contains beta and gamma subunits.

## Verified picture



Western blot analysis with SEC61A1  
antibody diluted at 1:1000