

## Anti-SERPINB5 Polyclonal Antibody

Cat: AC51225

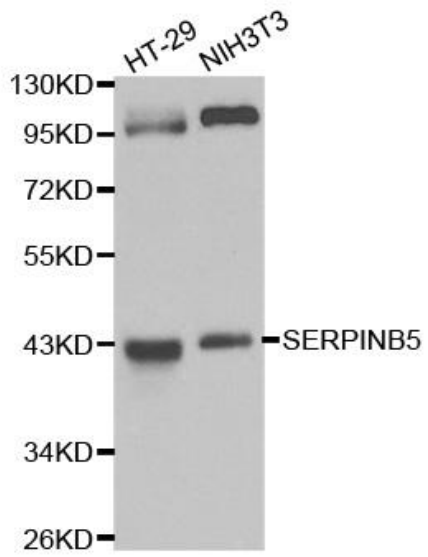
### Summary:

- |                                                                             |                                               |
|-----------------------------------------------------------------------------|-----------------------------------------------|
| <b>【Product name】</b> : Anti-SERPINB5 antibody                              | <b>【Source】</b> : Rabbit                      |
| <b>【Isotype】</b> : IgG                                                      | <b>【Species reactivity】</b> : Human Mouse Rat |
| <b>【Swiss Prot】</b> : P36952                                                | <b>【Gene ID】</b> : 5268                       |
| <b>【Calculated】</b> : MW:42kDa                                              | <b>【Observed】</b> : MW:43kDa                  |
| <b>【Purification】</b> : Affinity purification                               |                                               |
| <b>【Tested applications】</b> : WB                                           |                                               |
| <b>【Recommended dilution】</b> : WB 1:500-2000.                              |                                               |
| <b>【WB Positive sample】</b> : HT-29,NIH3T3                                  |                                               |
| <b>【Subcellular location】</b> : Secreted Cytoplasm                          |                                               |
| <b>【Immunogen】</b> : Recombinant protein of human SERPINB5                  |                                               |
| <b>【Storage】</b> : Shipped at 4°C. Upon delivery aliquot and store at -20°C |                                               |

### Background:

SERPINB5 (serpin peptidase inhibitor, clade B (ovalbumin), member 5) is a protein-coding gene. Diseases associated with SERPINB5 include polymorphous low-grade adenocarcinoma, and laryngeal carcinoma. GO annotations related to this gene include serine-type endopeptidase inhibitor activity. An important paralog of this gene is SERPINB7.

## Verified picture



Western blot analysis with SERPINB5  
antibody diluted at 1:1000