

Anti-CREB1 Rabbit Polyclonal Antibody

Cat: AC51237

Basic information

Source: Rabbit

Swiss Prot: P16220

Species reactivity: Human Mouse Rat

Gene ID:1385

Isotype: IgG

Tested applications: WB IHC IP

Purification: Affinity purification

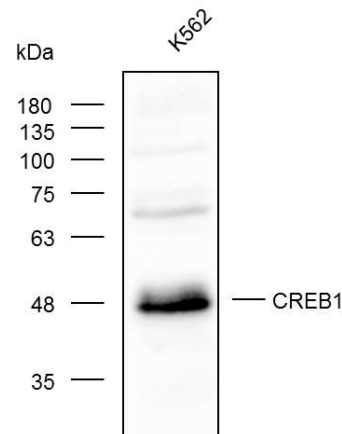
Immunogen:Recombinant protein of human CREB1

MW(kDa):37kDa

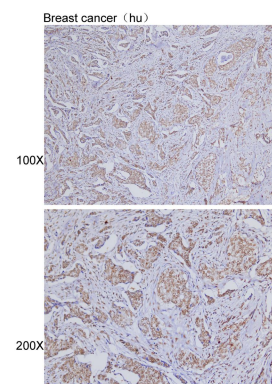
Storage: Shipped at 4°C. Upon delivery aliquot and store at -20°C. Avoid freeze / thaw cycles.

Background:

This gene encodes a transcription factor that is a member of the leucine zipper family of DNA binding proteins. This protein binds as a homodimer to the cAMP-responsive element, an octameric palindrome. The protein is phosphorylated by several protein kinases, and induces transcription of genes in response to hormonal stimulation of the cAMP pathway. Alternate splicing of this gene results in several transcript variants encoding different isoforms.



Western blot analysis with CREB1 diluted at 1:1,000



Immunohistochemistry of paraffin-embedded breast cancer (hu) using CREB1 at dilution of 1:100 (100x lens).