

Anti-GLMN Rabbit Polyclonal Antibody

Cat: AC51250

Basic information

Source: Rabbit

Swiss Prot: Q92990

Species reactivity: Human, Mouse

Gene ID: 11146

Isotype: IgG

Tested applications: WB IHC

Purification: Affinity purification

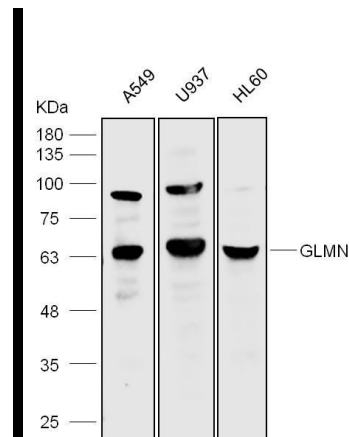
Immunogen: A synthetic peptide of human GLMN

MW(kDa): 68kDa

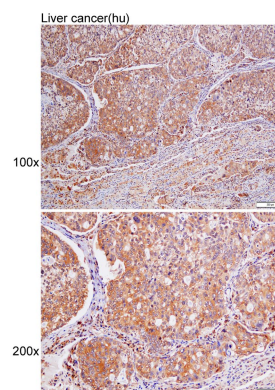
Storage: Shipped at 4°C. Upon delivery aliquot and store at -20°C. Avoid freeze / thaw cycles.

Background:

This gene encodes a phosphorylated protein that is a member of a Skp1-Cullin-F-box-like complex. The protein is essential for normal development of the vasculature and mutations in this gene have been associated with glomuvenous malformations, also called glomangiomas. Multiple splice variants encoding different isoforms have been found for this gene.



Western blot analysis with anti-GLMN Rabbit Polyclonal Antibody diluted at 1:1,000



Immunohistochemistry of paraffin-embedded Liver cancer(hu) using anti-GLMN Rabbit Polyclonal Antibody at dilution of 1:100 (x100 lens、x200 lens).