

Anti-STAT1 Polyclonal Antibody

Cat: AC51268

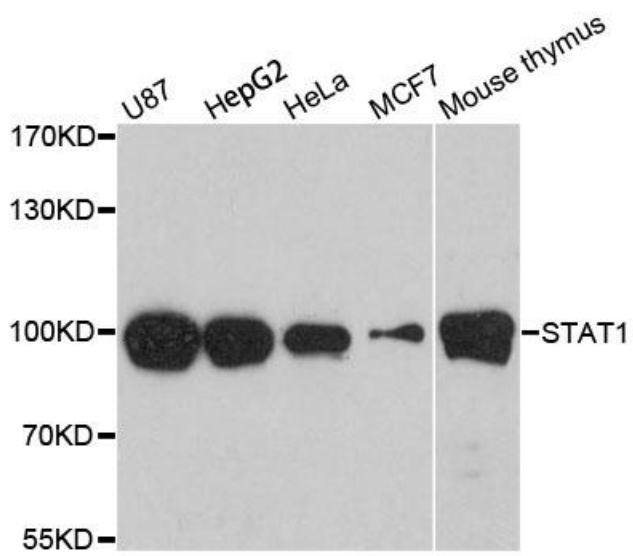
Summary:

- | | |
|---|---|
| 【Product name】 : Anti-STAT1 antibody | 【Source】 : Rabbit |
| 【Isotype】 : IgG | 【Species reactivity】 : Human Mouse Rat |
| 【Swiss Prot】 : P42224 | 【Gene ID】 : 6772 |
| 【Calculated】 : MW:83/87kDa | 【Observed】 : MW:100kDa |
| 【Purification】 : Affinity purification | |
| 【Tested applications】 : WB IHC IF IP | |
| 【Recommended dilution】 : WB 1:500-2000. IHC 1:50-200. IF 1:50-200. IP 1:20-50. | |
| 【WB Positive sample】 : U87,HepG2,HeLa,MCF7,Mouse thymus | |
| 【IHC Positive sample】 : | |
| 【Subcellular location】 : Cytoplasm Nucleus | |
| 【Immunogen】 : A synthetic peptide of human STAT1 | |
| 【Storage】 : Shipped at 4°C. Upon delivery aliquot and store at -20°C | |

Background:

The protein encoded by this gene is a member of the STAT protein family. In response to cytokines and growth factors, STAT family members are phosphorylated by the receptor associated kinases, and then form homo- or heterodimers that translocate to the cell nucleus where they act as transcription activators. This protein can be activated by various ligands including interferon-alpha, interferon-gamma, EGF, PDGF and IL6. This protein mediates the expression of a variety of genes, which is thought to be important for cell viability in response to different cell stimuli and pathogens. Two alternatively spliced transcript variants encoding distinct isoforms have been described.

Verified picture



Western blot analysis with STAT1 antibody
diluted at 1:1900